

**Rlte Care:**

**What's New and What's Ahead?**

---

**Rhode Island KIDS COUNT  
and  
The Poverty Institute**

**October 18, 2010**

**Review of Rlte Care Eligibility for  
Lawfully Residing Immigrant  
Children**

## **New Resources**

---

- ▶ **Rite Care Coverage for Immigrant Children and Families: Questions & Answers for Helper Organizations (English and Spanish)**
- ▶ **Rite Care Coverage for Immigrant Children and Families: Questions & Answers for Families (English and Spanish)**
- ▶ **Reminder – other Rite Care Outreach Materials available via Rhode Island KIDS COUNT Order Form (in packet)**

## **What is Rite Care?**

---

- ▶ Rhode Island's managed care health insurance program for low-income children and families.
- ▶ Combination Medicaid / CHIP program.
- ▶ Families choose from two health plans – Neighborhood Health Plan of Rhode Island or UnitedHealthCare of New England.

## What is Rlte Care?

---

- ▶ **Rlte Care is also the managed care delivery system for children who are otherwise eligible for Medical Assistance:**
  - Children with special health care needs,
  - Children in substitute care (foster care),
  - Children receiving adoption subsidy, and
  - Youth ages 18-21 who have aged out of foster care.

5

## Rlte Care Eligibility Criteria

---

- 1. Family Income**
- 2. U.S. Citizen or “eligible immigrant” categories**
- 3. Rhode Island residency**

6

## Rlte Care Family Income Guidelines

---

<u>Who</u>	<u>Income Limit</u>	
	FPL	Family of 3
▶ Child under age 19	250%	\$45,775
▶ Parent/relative	175%	\$32,043
▶ Pregnant woman	250%	\$45,775

(SOBRA Buy-In program available to pregnant women 250% - 350% FPL for \$295/month )

7

## Rlte Care Eligibility Criteria

---

1. Family Income
2. U.S. Citizen or “eligible immigrant” categories
3. Rhode Island residency

8

## **Brief Overview of Coverage for Non-Citizen Children in RI**

---

- ▶ Medicaid is a federal-state program enacted in 1966. The federal government provides matching funds to states for health care for certain pregnant women, infants, children, parents, seniors and people with disabilities.
  
- ▶ In the beginning... federal matching funds were available for many categories of non-citizens as long as they were lawfully present in the U.S.
  
- ▶ The Rite Care program, enacted in 1993, followed the federal rules.

## **Brief Overview of Coverage for Non-Citizen Children in RI**

---

- ▶ 1996: PRAWORA – Federal Law limited Medicaid to certain “qualified aliens” including:
  - Refugees, persons granted asylum
  - Lawful permanent residents – but only after 5 years
  
- ▶ 1997: RI Response – Maintain coverage for all lawfully present children using state funds
  
- ▶ 1998: RI expands coverage for all children regardless of status – including “undocumented”

## **Brief Overview of Coverage for Non-Citizen Children in RI**

---

- ▶ 2006: RI ends eligibility for children who do not meet federal definition of “qualified immigrant” and “grandfathers in” children who received Rite Care on or before 12/31/06.
- ▶ 2008: “Grandfathered” children are closed to Rite Care in June. (2,500 kids lost coverage, including lawfully present children and undocumented)

## **Brief Overview of Coverage for Non-Citizen Children in RI**

---

- ▶ 2009: CHIPRA – federal reauthorization of CHIP gives states option to cover lawfully residing children in Medicaid and CHIP and receive federal matching funds
- ▶ 2009: RI exercises federal option – included in FY 2010 budget
- ▶ 2010: Coverage for children started April 1, 2010

## Which children are eligible for Rite Care?

---

- ▶ Lawful permanent residents (green card).  
Do not need to wait 5 years.
- ▶ Temporary Protected Status (TPS )
- ▶ Deferred Enforced Departure (DED)
- ▶ Refugee and granted asylum
- ▶ Others – see chart

## Which categories are not eligible?

---

- ▶ Undocumented children
- ▶ Persons who are lawfully here, but are not residents of the state
  - Tourists (if current arrival/departure date)
  - Students
  - Children born to tourist or student. The child is a U.S. citizen but not a resident of Rhode Island

## **Which parents are eligible?**

---

- ▶ Refugee and asylee
- ▶ Lawful permanent resident – after 5 years in status or if in the U.S. before 8/22/96
- ▶ Battered immigrant (VAWA self-petition) – after 5 years
- ▶ Others – see chart

## **Reminder about Pregnant Women who are undocumented or who otherwise do not meet immigrant eligibility rule**

---

- ▶ All pregnant women who meet other RItE Care eligibility rules (income and residency) are eligible for RItE Care
- ▶ Includes lawfully present women (e.g., LPR in status less than 5 years) and undocumented (but not tourists or students)
- ▶ A child born in the U.S. is a citizen, so the child is eligible for RItE Care
- ▶ The mom is eligible for RItE Care for 60 days post-partum and then for Extended Family Planning for up to 24 months with a recertification at 12 months.

## Reminder about “mixed households”

---

- ▶ Parents who are undocumented can apply for Rite Care for their citizen children and do not need to provide information about themselves (except for income)
- ▶ Under confidentiality rules, a DHS staff person is prohibited from reporting individuals to CIS

## Public Charge

---

- ▶ Can getting Rite Care affect right of lawful permanent resident to become U.S. citizen? **NO**
- ▶ Can getting Rite Care affect right of immigrant to attain LPR status (is Rite Care considered in making a determination of “public charge”)? **NO**

## **Resources on Immigration Issues and Public Benefits**

---

### **International Institute (Immigration Issues)**

Carl Krueger

784-8643; [ckrueger@iiri.org](mailto:ckrueger@iiri.org)

[www.iiri.org](http://www.iiri.org)

### **RI Legal Services (Public Benefits)**

Mary Curtin

274-2652, [mcurtin@rils.org](mailto:mcurtin@rils.org)

[www.rils.org](http://www.rils.org)

## **Recent and Upcoming Changes to Rite Care**

## **New Rite Care Contracts**

---

- ▶ Rhode Island Department of Human Services (DHS) has contracts with the Rite Care health plans that determine the services that are covered, rates paid to providers, and measures of quality and access.
- ▶ Over summer of 2010, the Rite Care contracts were “re-procured” through a competitive bidding process.
- ▶ Rite Care and Rhody Health Partners (RHP - managed care for adults with disabilities) were re-bid together as a single managed care contract.

21

## **And then there were 2 ...**

---

- ▶ New managed care contracts began September 1, 2010.
- ▶ Blue Cross Blue Shield of Rhode Island (BCBSRI) chose not to bid on the contract.
- ▶ Applicants enroll in one of two Rite Care / RHP health plans –
  - Neighborhood Health Plan of Rhode Island
  - UnitedHealthcare of New England

22

## BCBSRI Transition

- ▶ 15,000 members (6,600 families) enrolled in BCBSRI
- ▶ Extensive overlap of physicians and other providers
- ▶ BCBSRI members will be auto-assigned to another plan but may opt-out to a different plan.
- ▶ Families can change health plans for up to 90 days
- ▶ Prior authorizations currently in place will be honored

23

## BCBSRI Transition

Rollout Phase	Mailing Date	Enrollment Effective Date	Regions Included	Estimated # of Clients	Field Offices Affected
I	9/15/10	10/18/10	Providence Pawtucket	4,165	Providence Pawtucket
II	10/1/10	11/1/10	Northern RI	3,615	Woonsocket
III	10/15/10	11/15/10	East Bay Aquidneck Island Block Island South County	3,873	East Providence Wakefield
IV	11/1/10	12/1/10	West Bay	3,631	Warwick

24

## **“Generics First” Policy**

---

- ▶ **Implemented for children and parents in “core” Rite Care in February 2009.**
- ▶ **Children with special health care needs (SHCN/CSN) and Rhode Health Partners (RHP) members were excluded at that time.**
- ▶ **New managed care contracts include a “Generics First” policy for all managed care populations effective October 1, 2010.**

25

## **“Generics First” Policy**

---

- ▶ **“Generics first” protocols for SHCN/RHP members will be the same as those that were established for “core” Rite Care – same “exempt” list of medications**
- ▶ **Coverage of brand name drugs in a therapeutic class or single agent not included in the exempt list will be permissible on a case-by-case basis.**
  - **Will require provider to demonstrate medical necessity and lack of efficacy of a generic drug for that patient**
- ▶ **DHS has established a Medicaid Managed Care Prescription Drug Benefit Review Committee to monitor the program changes.**

26

## **“Generics First” Policy**

---

DHS reports that after core “Generics First” policy shift:

- ▶ **Average 86% Generic Dispensing Rate across all populations**
- ▶ **Provider prescribing patterns have shifted:**
  - Current CSHCN generic substitution rate = 74%
  - Current RHP generic substitution rate = 81%

27

## **Communities of Care**

---

- ▶ **DHS initiative to “improve health outcomes and reduce Emergency Department Utilization”**
- ▶ **Still being developed between DHS and health plans (NHPRI and UHC)**
- ▶ **Rite Care / RHP members with 4 or more ED visits in a year will be identified as candidates for “Communities of Care.”**

28

## Communities of Care

---

### ▶ Key Features:

- Dedicated Provider Network (member required to choose single primary care provider, pharmacy...)
- Select Provider Referral (member referred to providers who are skilled in addressing complex health care needs)
- Enhanced Care Management
- Peer Navigators
- Personal Responsibility and Wellness Incentives

- ▶ DHS will be working on different network for pregnant women who are identified as frequent ED users.

29

## Birth Certificates - Puerto Rico

---

- ▶ The government of Puerto Rico has announced that as of October 30, 2010, they are invalidating all Puerto Rico-issued birth certificates dated before July 1, 2010.
- ▶ People who apply for Rite Care **for the first time** after October 30, 2010 may not use a Puerto Rican birth certificate issued before 7/1/10 as a way to prove citizenship.
- ▶ Families **currently enrolled or who have been enrolled in Rite Care at any point since 2007 (when federal citizenship documentation rules went into effect)** have already documented their citizenship, so will not need to resubmit birth certificates now, at renewal, or if they re-apply in the future.

30

## Birth Certificates - Puerto Rico

---

- ▶ DHS accepts other documents besides a birth certificates to prove identity and U.S. citizenship (see list in your packet).
- ▶ See information on Puerto Rico Federal Affairs Administration website for more information on how to apply for a new birth certificate – [www.prfaa.com](http://www.prfaa.com)

31

## What Does National Health Reform Hold for Children and Families in Rhode Island?

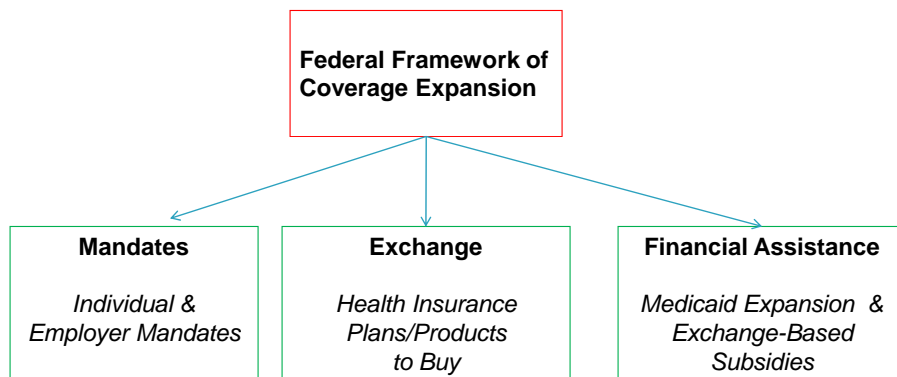
## Health Care Reform

---

- ▶ Patient Protection and Affordable Care Act (PPACA)
- ▶ Signed by President Obama on March 23, 2010
- ▶ Provisions vary in implementation dates, but are being phased in over time to ensure one part of the system builds on another as needed.
- ▶ Includes many provisions affecting private/ commercial health coverage and public programs
- ▶ Includes something for everyone – children, parents, adults, seniors, people with special health care needs

## Coverage Expansions

---



Source: RI DHS, CCFH September 2010 PPACA presentation

## Key Health Reform Provisions for Children

---

Rhode Island KIDS COUNT September 2010 publication (packet)

- ▶ RIte Care Eligibility is Protected until 2019
- ▶ RIte Care Premiums will Remain at Current Levels until at least June 2011
- ▶ Preventive Services and Wellness Care will be Free Under New Plans
- ▶ Insurers Cannot Deny Coverage for Children who have Pre-Existing Conditions
- ▶ Young Adults Up to Age 26 Can be Covered as Dependents on their Parent's Coverage
- ▶ No Lifetime Caps or Restrictive Annual Limits on Health Coverage
- ▶ Insurers Cannot Drop Coverage for Children or Parents if They Get Sick

## Health Reform: (Select) Key Dates for Children & Families

---

### 2010

- ▶ MOE Protections (more later)
- ▶ Small employers receive tax credits
- ▶ Temporary (until 2014) high-risk pool is established in every state for qualified uninsured persons with pre-existing conditions (BCBSRI)
- ▶ Seniors get rebates/discounts toward drug coverage ("donut hole" to be closed by 2020).
- ▶ Other provisions on previous slide

### 2011

- ▶ States provided federal grants to plan for and establish Exchanges

### 2013

- ▶ Medicaid physician payments increased, at federal cost, to Medicare levels for primary care

## Health Reform: (Select) Key Dates for Children & Families

---

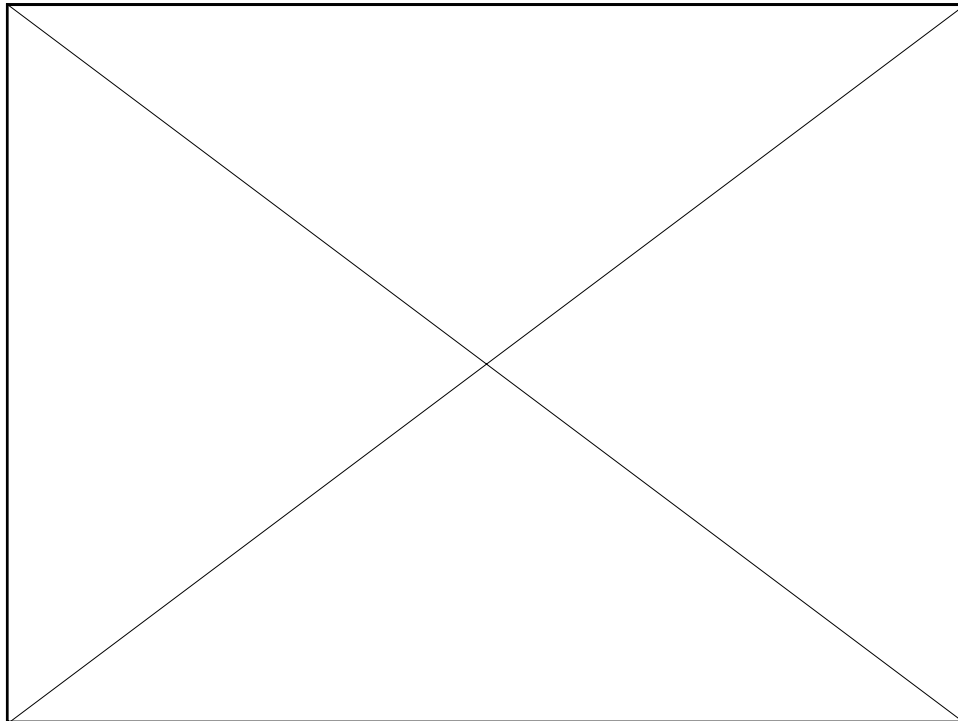
### 2014

- ▶ Most people required to purchase coverage or pay a tax penalty.
- ▶ New federal Medicaid floor of 133% FPL for all adults and children (more later)
- ▶ Enhanced federal financial assistance for states
- ▶ Individuals (including lawfully residing immigrants) and small businesses can purchase affordable coverage through state-based Exchanges.
- ▶ Low- and moderate-income families receive premium tax credits and cost-sharing subsidies
- ▶ Children up to age 26 who “age-out” of foster care are eligible to continue to get Medicaid coverage
- ▶ Insurers must remove pre-existing bans, annual coverage limits, or lifetime limits for adults and can no longer charge higher premiums based on health status.

### 2015

- ▶ CHIP funded through September 30, 2015.
- ▶ States receive a 23 percentage point increase in CHIP federal match rate (10/1/15)

Source: *Key Health Care Reform Dates for Children and Families*, Center for Children and Families, Georgetown University, April 2010.



## **Health Care Reform and Rite Care**

---

**Beginning January 2014:**

- ▶ **Minimum Medicaid eligibility = 133% FPL**
- ▶ **Subsidies for families/individuals with income between 100% – 400% FPL**
- ▶ **To qualify for subsidy, must purchase through “the exchange”**

## **Health Care Reform – Maintenance of Effort**

---

- ▶ **Rite Care eligibility limit for children cannot be reduced before October 1, 2019**
- ▶ **Rite Care eligibility for pregnant women cannot be reduced before January 1, 2014**
- ▶ **Rite Care eligibility limit for parents cannot be reduced until January 1, 2014 unless state has a budget deficit**

## **Health Care Reform / Rite Care Risk**

---

### **Parents**

- ▶ State *could* roll back parent eligibility to 133% FPL beginning July 1, 2011.
- ▶ Around 6,000 parents would lose Rite Care coverage.
- ▶ Subsidized coverage through exchange does not start until January 2014.

### **Premiums**

- ▶ *Could* be increased and required of families of lower incomes.

## **Health Care Reform – Rite Care and The Exchange**

---

- ▶ Exchange: Market place for choosing health care plan (individuals and small business)
- ▶ Individuals/families with income between 100 – 400% FPL are eligible for subsidy – including premium assistance and reduction in cost-sharing
- ▶ State must provide for determination of eligibility/enrollment in Medicaid or subsidized exchange plan...and flow between programs

## **Health Care Reform – Lots of Decisions**

---

- ▶ What will the Exchange look like – who runs it?
- ▶ How will the Exchange interface with Medicaid?
- ▶ How can we keep children and families enrolled in the same health plan?

## **Health Care Reform – What's Next**

---

- ▶ Grant to Office of Health Insurance Commissioner and Dept. of Human Services – Exchange and Medicaid Planning
- ▶ Healthy RI Task Force Report: Getting National Health Care Reform Right for Rhode Island  
[www.ltgov.ri.gov/taskforce/](http://www.ltgov.ri.gov/taskforce/)
- ▶ Look for legislation in the 2011 Rhode Island General Assembly session

# Maximizing Resources for Families – Other Public Benefits

## Maximizing Benefits

---

- Poverty Institute Guide to Government Assistance Program
- Screen families for eligibility for programs that can help make ends meet
- Brochure for families describing programs and how to apply
- Information re: immigrant eligibility

## Ways to Use The Guide: Summary Chart By Population

**GUIDE TO GOVERNMENT ASSISTANCE PROGRAMS**

**SUMMARY CHART BY POPULATION**

Click on the red links in the box to read more information about each of the programs.  
Click here to download a PDF version of the following chart.

	INCOME SUPPORT	FOOD ASSISTANCE	CHILD CARE	HEALTH CARE	HOUSING	UTILITIES
<b>FAMILIES WITH MINOR CHILDREN</b>	<a href="#">RI Works</a> <a href="#">EITC</a> <a href="#">Child Tax Credit</a> <a href="#">Child Support</a> <a href="#">Unemployment Insurance</a>	<a href="#">SNAP</a> <a href="#">WIC</a> <a href="#">Free/Reduced Meals</a> <a href="#">Summer Food</a> <a href="#">Other Food Assistance</a>	<a href="#">Child Care Subsidy</a> <a href="#">Child Care Tax Credit</a> <a href="#">Head Start &amp; Early Head Start</a>	<a href="#">Rite Care/Rite Share</a> <a href="#">Katie Beckett (for children w/ disabilities)</a> <a href="#">Dental Assistance</a> <a href="#">Hospital Free Care</a> <a href="#">Pharmaceutical Assistance</a> <a href="#">Other Health Resources</a>	<a href="#">Rental Assistance</a> <a href="#">Property Tax Relief</a> <a href="#">Road Home</a> <a href="#">Other Housing Assistance</a>	<a href="#">LIHEAP</a> <a href="#">Telephone Assistance</a>
<b>ADULTS WITH DISABILITIES: PERMANENTLY DISABLED</b>	<a href="#">SSI</a> <a href="#">GPA Bridge</a>	<a href="#">SNAP</a> <a href="#">Other Food Assistance</a>	----N/A----	<a href="#">Medical Assistance</a> <a href="#">Medicare Premium Assistance</a> <a href="#">Dental Assistance</a> <a href="#">Hospital Free Care</a> <a href="#">Pharmaceutical Assistance</a> <a href="#">Other Health Resources</a>	<a href="#">Rental Assistance</a> <a href="#">Property Tax Relief</a> <a href="#">Road Home</a> <a href="#">Other Housing Assistance</a>	<a href="#">LIHEAP</a> <a href="#">Telephone Assistance</a>
<b>ADULTS WITH DISABILITIES: TEMPORARILY DISABLED</b>	<a href="#">GPA Hardship</a>	<a href="#">SNAP</a> <a href="#">Other Food</a>	----N/A----	<a href="#">GPA Medical</a> <a href="#">Dental Assistance</a> <a href="#">Hospital Free Care</a>	<a href="#">Property Tax Relief</a> <a href="#">Road Home</a>	<a href="#">LIHEAP</a> <a href="#">Telephone</a>

## Ways to Use The Guide: Summary Chart by Income Limits (monthly & yearly)

**GUIDE TO GOVERNMENT ASSISTANCE PROGRAMS**

**FAMILY ELIGIBILITY FOR PUBLIC ASSISTANCE PROGRAMS**

**MONTHLY INCOME LIMITS**  
June 1, 2009

Family Size	RI Works Unearned	RI Works Earned	SNAP**	Rite Care/Share Parents 175% FPL	Subsidized Child Care 180% FPL	WIC 185% FPL	Rite Care/Share Children/Pregnant Women * 250% FPL
1	\$327	\$824	\$1,670	\$1,579	n/a	\$1,670	\$2,256
2	\$449	\$1,068	\$2,246	\$2,125	\$2,186	\$2,246	\$3,035
3	\$554	\$1,278	\$2,823	\$2,670	\$2,747	\$2,823	\$3,815
4	\$634	\$1,438	\$3,399	\$3,216	\$3,308	\$3,399	\$4,594

## Ways to Use The Guide: Immigrant Eligibility for Government Benefits

<p>About Us</p> <p>What We Do</p> <p>Issue Areas</p> <p><b>RI Poverty, Wages &amp; Income Data</b></p> <p>Public Benefits &amp; Programs</p> <p>Workforce Development</p> <p>State Budget</p> <p>State &amp; Federal Tax Policy</p> <p>Reports &amp; Presentations</p> <p>News &amp; Events</p> <p>Guide to Gov't Assistance Programs</p> <p>Affiliated Projects</p> <p>Support the Poverty Institute</p> <p>For the Media</p> <p><b>Help us...</b> Looking for ways to help? <a href="#">donate now!</a></p>	<h3>GUIDE TO GOVERNMENT ASSISTANCE PROGRAMS</h3> <h4>Immigrant Eligibility for Government Benefits</h4> <p>The eligibility rules for immigrants are complex and vary from program to program. (We use the term "immigrant" to include all people who are not citizens.) Under federal laws enacted in 1996, immigrants are divided into "qualified" immigrants who are eligible for federal benefits and "unqualified" who are not. "Qualified" immigrants include, for example, lawful permanent residents ("LPR"), refugees and asylees. Even if the immigrant is "qualified," however, restrictions on eligibility may apply if the immigrant entered the United States on or after August 22, 1996. For example, generally, adult LPRs are not eligible for Medicaid, SNAP benefits or RI Works cash assistance for the first five years.</p> <p>In the Guide, we briefly describe immigrant eligibility for each program. The chart below should be consulted for more detail on immigrant eligibility. If the program does not require proof of citizenship or immigrant status (so non-citizens, including individuals who are undocumented, may be eligible) we have indicated that "Citizen and immigrant information is not required."</p> <p>In addition to understanding whether an immigrant may be eligible for federal benefits, there are a few other issues that are helpful to understand:</p> <p><b>Mixed Households:</b> These are families in which the parent is not eligible for benefits (generally because she/he is undocumented) but the children are born in the U.S. and are thus citizens who may be eligible for benefits. Parents can apply for benefits for their eligible children without applying to themselves. Only information pertaining to those who are applying needs to be provided, so the parent need not provide information about him/herself. There is one exception: If the parent is working or has other income, the parent's income must be reported and documented (e.g., by providing pay stubs or statement from the employer). It is important to know that it is illegal for state agency staff to provide any information to the U.S. Immigration and Customs Enforcement ("ICE") or to U.S. Citizenship and Immigration Services ("CIS") the two federal agencies that interpret and enforce immigration policy.</p> <p><b>Public Charge:</b> Immigrants may be reluctant to apply for government benefits because they fear that doing so may affect their immigration status under the "public charge" provision of the immigration laws. This provision applies when an immigrant (except for a refugee or asylee) applies to become a lawful permanent resident. If it is determined that the applicant is likely to become a "public charge" the application for permanent residence can be denied. The determination must be based on the totality of the circumstances, including the individual's health, age, income, education and skills and affidavits of support.</p> <p>Most of the benefits described in the Guide are <u>not</u> considered in public charge determinations. The benefits that may raise public charge concerns are</p>
---	---

## A little good news for RI Works families

- ▶ **RI Works is the state's cash assistance program for children and their parents and provides work readiness services for parents**
- ▶ **Families can receive no more than 24 months of benefits (in any 60 month period) with a lifetime limit of 48 months**
- ▶ **After the time limit expires, the family can receive "hardship" benefits**

## **A little good news for RI Works families**

---

- ▶ **Hardship benefits had been provided in 3 month increments**
- ▶ **Beginning October 2010, hardship benefits are provided for 6 months for the initial period and then for additional 3 month increments**
- ▶ **Current maximum = 12 months of hardship benefits**

## **A little good news for RI Works families**

---

- ▶ **Hundreds of families were closed to cash assistance last June because of the 24 month time limit**
- ▶ **Families that received hardship benefits should not have been closed at the end of September – will continue through end of December and can apply for two additional 3-month periods**

## Health Care for Uninsured Rhode Islanders

---

### ▶ Community Health Centers

- Medical and dental care. Some centers provide mental health and substance abuse treatment .
- 10 community centers with 27 locations around the state
- Sliding scale fee for uninsured patients

[www.rihca.org](http://www.rihca.org)

## Health Care for Uninsured Rhode Islanders

---

### ▶ The Rhode Island Free Clinic

- Primary care, prevention education, specialty referrals, medication, wellness programs
- Services provided at clinic and physician network
- Individuals 18 – 64. Income at or below 150% FPL.
- New patient lottery the first Thursday of the month at 4:00. Go to 655 Broad St.
- Bring: proof of RI residence, photo ID, proof of income (or letter of support from person providing food/shelter)
- Contact RIFC or see website for details about eligibility.

[www.rifreeclinic.org](http://www.rifreeclinic.org)

## **Health Care for Uninsured Rhode Islanders**

---

### **▶ Clinica Esperanza**

- Primary care, prevention education, specialty services, medication
- Services provided at clinic
- Uninsured individuals who do not have doctor
- Call 347-9093, Monday – Thursday, 12 – 5 to make an appointment
- 60 Valley St. (next Cuban Revolution restaurant)

[www.aplacetobehealthy.org](http://www.aplacetobehealthy.org)

## **Hospital Charity Care**

---

- ▶ Uninsured, low-income RI residents (primary permanent residence is Rhode Island – regardless of citizenship or immigration status)
- ▶ Covers inpatient and outpatient essential medical services routinely billed by the hospital
- ▶ Free care for patients with income below 200% FPL
- ▶ Sliding scale for patients with income between 200% and up to/including 300% FPL

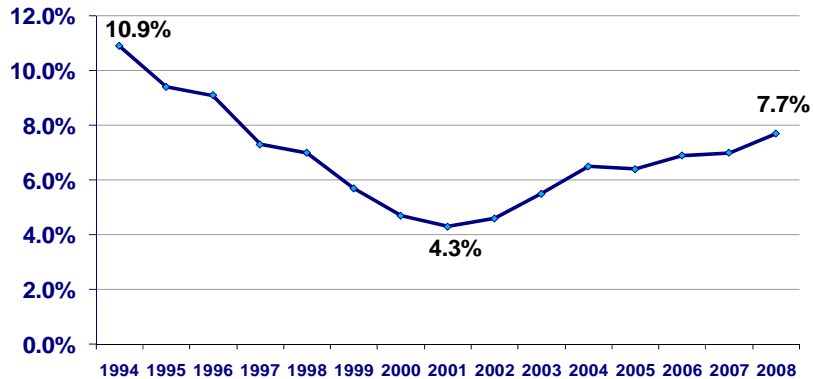
## **Keep Up the Good Work: Outreach and Enrollment**

**Our shared goal:**

---

**100%** of children living in Rhode Island are covered by affordable, high quality health insurance.

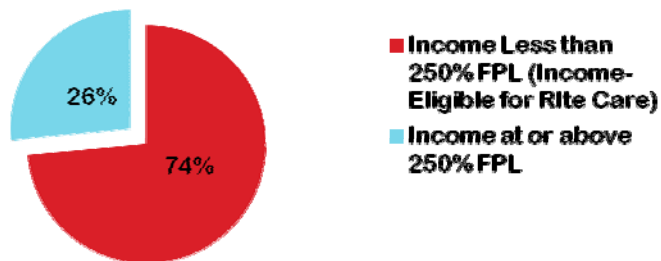
## Children without Health Insurance, Rhode Island, 1993-2008 3-Year Averages



Source: US Census Bureau, Current Population Survey, 1993-2008, three-year averages. Data are for children under 18 years of age.  
Prepared by Rhode Island KIDS COUNT, 2010.

## Who are the Uninsured Children?

**Children Under Age 19  
Without Health Insurance,  
by Poverty Level, Rhode Island,  
2007-2009**



n = 19,675 uninsured children

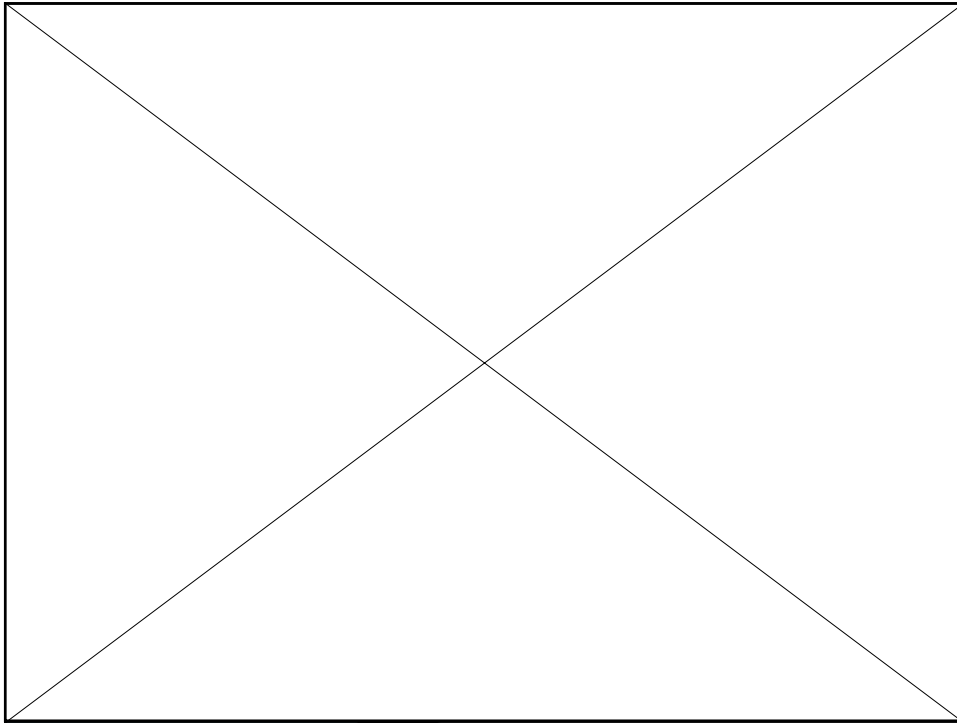
# 1,160

61

## Family Resource Counselors

- ▶ FRCs assist families in completing Rite Care applications, including supporting documentation. All FRC services are free.
- ▶ Screen families for other benefits, such as cash assistance, SNAP, and WIC.
- ▶ FRCs do not determine eligibility (DHS does).
- ▶ See list of FRCs in packet and at RIHCA website at [www.rihca.org](http://www.rihca.org).

62



### **Resources in your Packet:**

---

- ▶ **Rlte Care Health Insurance is Available for Children (Customizable option also available)**
- ▶ **Rlte Care Flyer (Available in 10 languages-English with Arabic, Chinese, Khmer, Laotian, Portuguese, Spanish, Swahili, and Vietnamese)**
- ▶ **Rlte Care Factsheets (E/S/P)**
- ▶ **Rlte Care/Rlte Share Health Insurance Tips (E/S)**
- ▶ **Documents you need to apply for Rlte Care/Rlte Share (E/S)**
- ▶ **DHS Authorized Representatives**
- ▶ **Community Locations for Cash Payments list**
- ▶ **Dental providers accepting Medical Assistance (E/S)**

## Your Assignment...

---

- ▶ Talk about Rlte Care and Rlte Share.
- ▶ When screening for eligibility for one type of family support program, always ask about health insurance coverage.
- ▶ Refer families to Family Resource Counselors (FRCs).
- ▶ Encourage families to apply and to stay enrolled if they are already members.
- ▶ Protect the gains made by Rlte Care.

65

## RlteCareWORKS.org

### **A Growing Coalition Dedicated to Preserving Rlte Care:**

- ▶ 46 member organizations
- ▶ Over 10,000 individuals

### **Accomplishments include:**

- ▶ Restoring eligibility for LPR Children
- ▶ Preventing cuts to dental coverage for adults
- ▶ Thousands of postcards, emails and phone calls to legislators
- ▶ Over 100 stories in local media
- ▶ Presentations and workshops at dozens of organizations
- ▶ Talking to hundreds of uninsured families at Back To School Celebration
- ▶ Creation of Issue Briefs to educate legislators and public

[www.RlteCareWorks.org](http://www.RlteCareWorks.org)

## Rlte Care Resources

---

- ▶ Rhode Island KIDS COUNT  
[www.rikidscount.org](http://www.rikidscount.org)  
*(All workshop materials will be posted here.)*
- ▶ Poverty Institute  
[www.povertyinstitute.org](http://www.povertyinstitute.org)
- ▶ Rhode Island Department of Human Services  
[www.dhs.ri.gov](http://www.dhs.ri.gov) (NEW AND IMPROVED!)
- ▶ Rlte Care Works Coalition  
[www.RlteCareWorks.org](http://www.RlteCareWorks.org)

67

## Thank You!

---

- ▶ Please complete yellow EVALUATION FORMS!
- ▶ Fill out Rhode Island Kids Count CONTACT FORM (green) and Poverty Institute SIGN UP FORM (pink).
- ▶ Leave evaluations and forms on your table or return to the registration table.
- ▶ Don't forget to pick up RITE CARE POSTERS and FLYERS! Order more using ORDER FORM.

68