

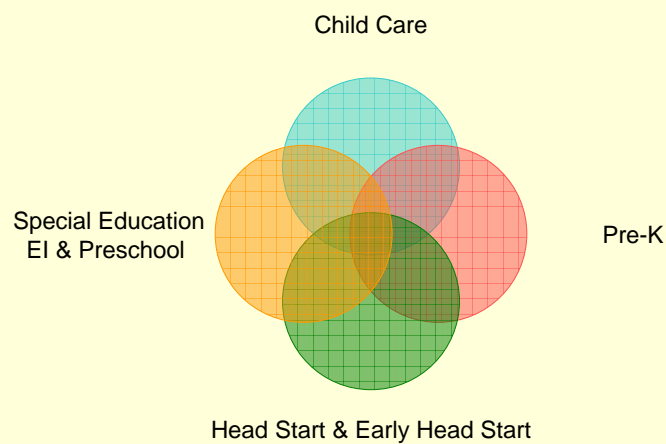
Early Care and Education



Decoding the Economic Stimulus:
An Informational Forum
March 19, 2009

Presented by: Leanne Barrett
Policy Analyst, Rhode Island KIDS COUNT

Early Care & Education System



Early Care & Education Costs

Average Annual Cost for Full-Time Child Care, Rhode Island, 2006

PROGRAM TYPE	COST PER CHILD
Child Care Center (infant care)	\$10,557
Child Care Center (preschool care)	\$8,736
Family Child Care Home (preschool care)	\$8,140
School-Age Center-Based Program (child age 6-12)	\$6,902

Source: Rhode Island KIDS COUNT analysis of average weekly rates from Bodah, M. M. (2006). *Statewide survey of childcare rates in Rhode Island*. Kingston, RI: University of Rhode Island.

- Early care & education is expensive
- Higher quality care is more expensive!
- Monthly costs are more than average rent and nearly as much as a mortgage payment
- Higher average cost than public university

Early Care & Education Financing

Federal Funding

- Child Care Development Fund
- Head Start
- IDEA
- Title I

State Funding

- Child Care Subsidy
- Head Start State Contribution
- Early Childhood Investment Fund

Private Funding

- Families
- Employers

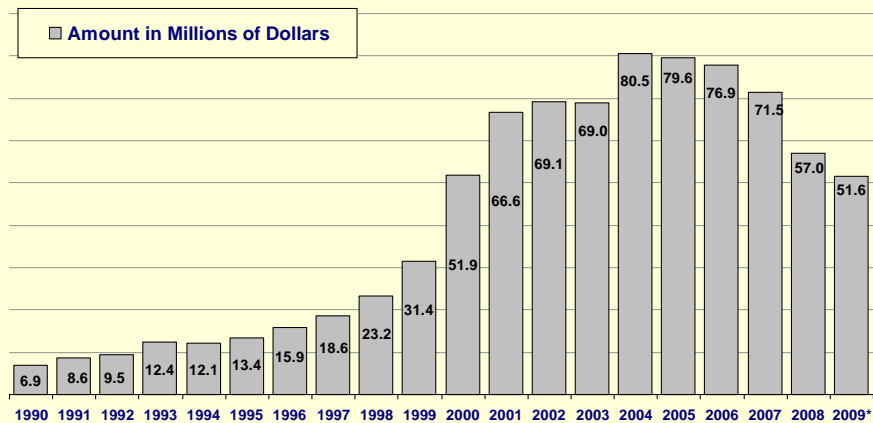
Local Funding

- Special Education

Child Care & Development Block Grant (CCDBG)

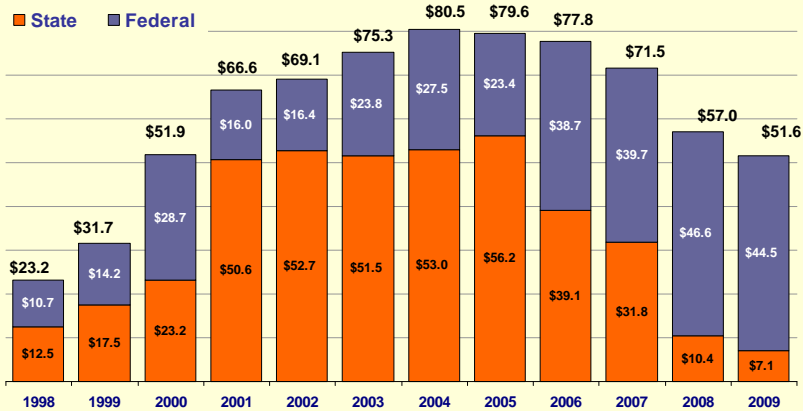
- The Child Care and Development Block Grant provides funds to states to support child care assistance for low-income working families.
- Federal TANF funds are also used for child care subsidies in Rhode Island

Rhode Island Child Care Subsidy Program Subsidy Expenditures by State Fiscal Year



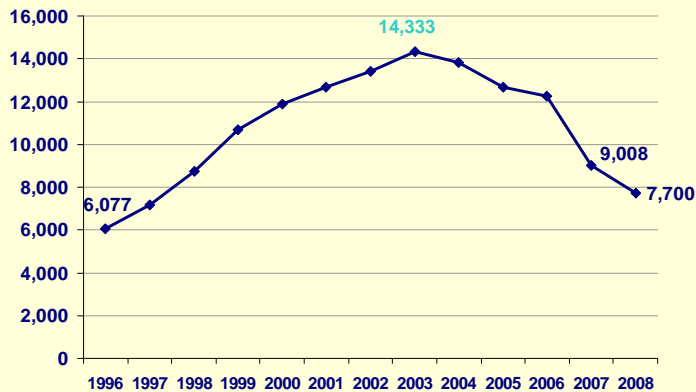
Source: Rhode Island Department of Human Services and the Rhode Island Enacted Budget, FY 2009. *Note: FY 1990 – 2008 represent final expenditures. FY 2009 represents the enacted allocations.
Prepared by Rhode Island KIDS COUNT, 2009.

Rhode Island Child Care Subsidy Program Subsidy Expenditures (in millions) by State Fiscal Year*



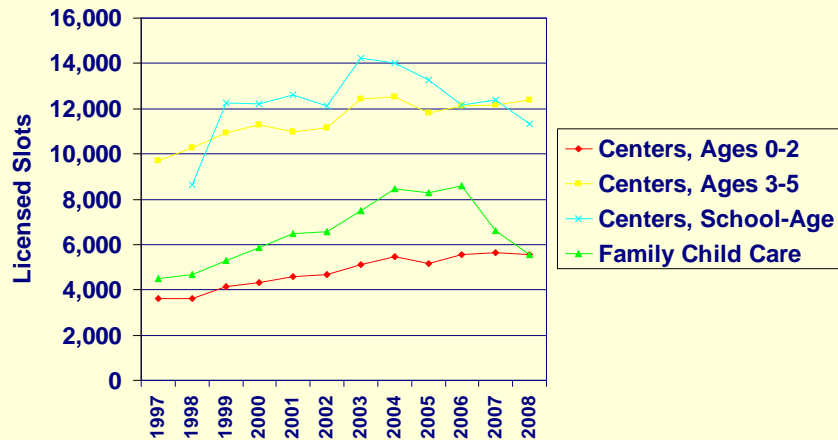
Source: Rhode Island Department of Human Services and the Rhode Island Enacted Budget, FY 2009. *Note: FY 1998 – 2008 represent final expenditures. FY 2009 represents the enacted budget allocation.
Prepared by Rhode Island KIDS COUNT, 2009.

Child Care Subsidies, Rhode Island, 1996-2008



Source: Rhode Island Department of Human Services, 1996-2008.
Prepared by Rhode Island KIDS COUNT, 2009.

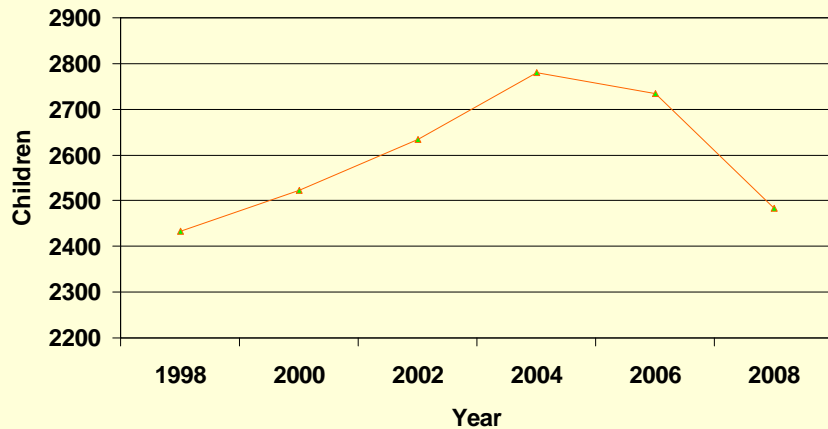
Licensed Child Care Slots, Rhode Island, 1997-2008



Head Start, Early Head Start & Pre-K

- Head Start (3-school entry) & Early Head Start (0-2) are federally funded comprehensive early childhood education programs for very low income children and their families.
- Rhode Island spends \$1.2 million to supplement \$22 million in federal Head Start funds for Rhode Island (down from \$3.3 million)
- Rhode Island is one of only 12 states that does not have state-funded Pre-K.

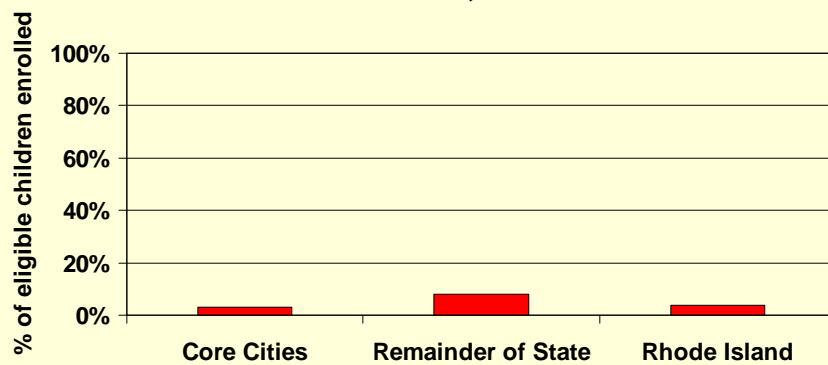
Head Start Enrollment Rhode Island, 1998 – 2008



Source: Rhode Island Department of Human Services, 1996-2008.
Prepared by Rhode Island KIDS COUNT, 2009.

Early Head Start

Early Head Start Participation Rate,
Rhode Island, 2008

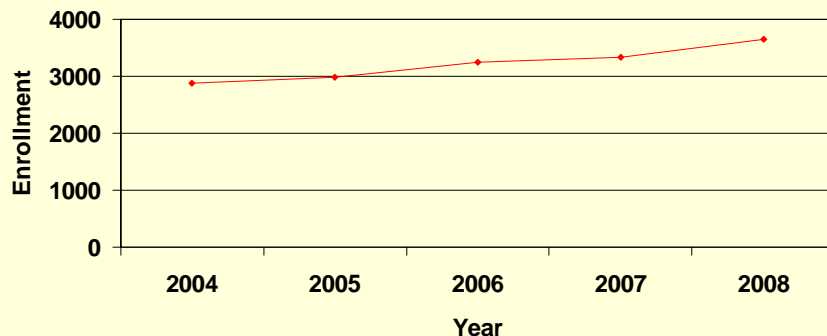


IDEA

- The Individuals with Disabilities Education Act (IDEA) is a law ensuring services to children with disabilities throughout the nation. IDEA governs how states and public agencies provide early intervention, special education and related services to more than 6.5 million eligible infants, toddlers, children and youth with disabilities.
- Infants and toddlers with disabilities (birth-2) and their families receive early intervention services under IDEA Part C. Children and youth (ages 3-21) receive special education and related services under IDEA Part B.
- Special Education for preschoolers (ages 3 to school entry) is called Part B, Section 619
- In Rhode Island, IDEA Part C is administered by the Department of Human Services and delivered by Early Intervention providers and IDEA Part B is administered by RIDE and delivered by LEAs.

Special Education: Early Intervention (Part C of IDEA)

Children Enrolled in Early Intervention,
Rhode Island, 2004-2008



ARRA Stimulus Funds for Early Care & Education



Rhode Island ARRA Funds for Early Care & Education

- \$5.2 million for the Child Care & Development Block Grant
- Nationally \$1 billion for Head Start and \$1.1 billion for Early Head Start (goes directly to local providers – no estimated state allocation available)
- \$2.1 million for IDEA Part C
- \$1.7 million for IDEA Part B, Section 619 (\$43.7 million total for IDEA Part B)
- \$35.8 million for Title I

CCDBG

- FY08 CCDBG Actual for Rhode Island: \$17.3 million
- ARRA Stimulus for Rhode Island: \$5.2 million.
- \$4.5 million general CCDBG
- \$431,873 targeted for quality expansion
- \$250,111 targeted for infant/toddler quality

CCDBG Stimulus & Rhode Island

- Ideas generated and discussed at Permanent Legislative Commission on Child Care meetings (Rep. Grace Diaz, Chair)
- Letter with suggestions for stimulus funds sent to Governor, legislators, state agencies by Commission

CCDBG Stimulus Ideas

- Increase eligibility for child care (entrance/exit strategy, extra hours for families in education)
- Reduce or eliminate parent co-payments
- Ease administrative burdens (re-certify every 12 months, child support enforcement, asset test)
- Invest in quality (TEACH, incentives/supports for providers to improve quality)
- Restore eligibility to children ages 13-15

Head Start & Early Head Start

- Head Start ARRA Stimulus - regular formula for expansion
- Early Head Start ARRA Stimulus – awarded on a competitive basis (federal RFP) with 10% reserved for training and technical assistance and 3% for monitoring

IDEA in Rhode Island

- FY08 IDEA Part B Actual for Rhode Island: \$41.5 million.
- ARRA Stimulus IDEA Part B for Rhode Island: \$43.7 million
- FY08 IDEA Part B Preschool (section 619) Actual for Rhode Island: \$1.6 million
- ARRA Stimulus IDEA Part B Preschool (section 619) for Rhode Island: \$1.7 million
- FY08 IDEA Part C Actual for Rhode Island: \$2.1 million
- ARRA Stimulus IDEA Part C for Rhode Island: \$2.1 million

IDEA Stimulus & Rhode Island

- In general, IDEA funds are to be used for the “excess costs” associated with educating a child with a disability.
- The problem with early childhood IDEA is there is no regular education program.
- IDEA Part B funds are allocated by RIDE to districts through the annual Consolidated Resource Application process.
- IDEA Part C funds are administered by DHS. The Interagency Coordinating Council (ICC) is an advisory group.

IDEA Stimulus Early Childhood

OSEP Guidance for Part B:

- Expand and strengthen professional development and data systems
- Improve inclusive placement options for preschoolers (sustainability?)

OSEP Guidance for Part C:

- TBD

Title I

- Title I provides financial assistance to LEAs and schools with high percentages of poor children to help ensure that all children meet challenging state academic standards.
- Districts use Title I funds to provide additional academic support and learning opportunities to help low-achieving children master challenging curricula and meet state standards in core academic subjects. For example, funds support extra instruction in reading and mathematics, as well as special preschool, after-school, and summer programs to extend and reinforce the regular school curriculum.
- Title I funds were used to establish the landmark Chicago Child-Parent Early Learning Centers.

Title I & Rhode Island

- FY08 Actual for Rhode Island: \$60 million
- ARRA Estimate for Rhode Island: \$35.8 million (80% for core city LEAs)
- Allocated by RIDE to districts through the annual Consolidated Resource Application process.
- RIDE can target the focus of 4% of Title I funding with the caveat that 95% of this funding must go back to the LEAs.

Title I Stimulus & Preschool

USDOE guidance:

- Expand and strengthen Title I early education programs by aligning with state Early Learning Standards and state content standards
- If there is a plan for sustainability beyond 2010-2011, expand high-quality early education.

Leanne Barrett
Policy Analyst
Rhode Island KIDS COUNT
One Union Station
Providence, RI 02903
www.rikidscount.org
lbarrett@rikidscount.org
(phone) 401-351-9400
(fax) 401-351-1758

