

# A Celebration of Children's Health



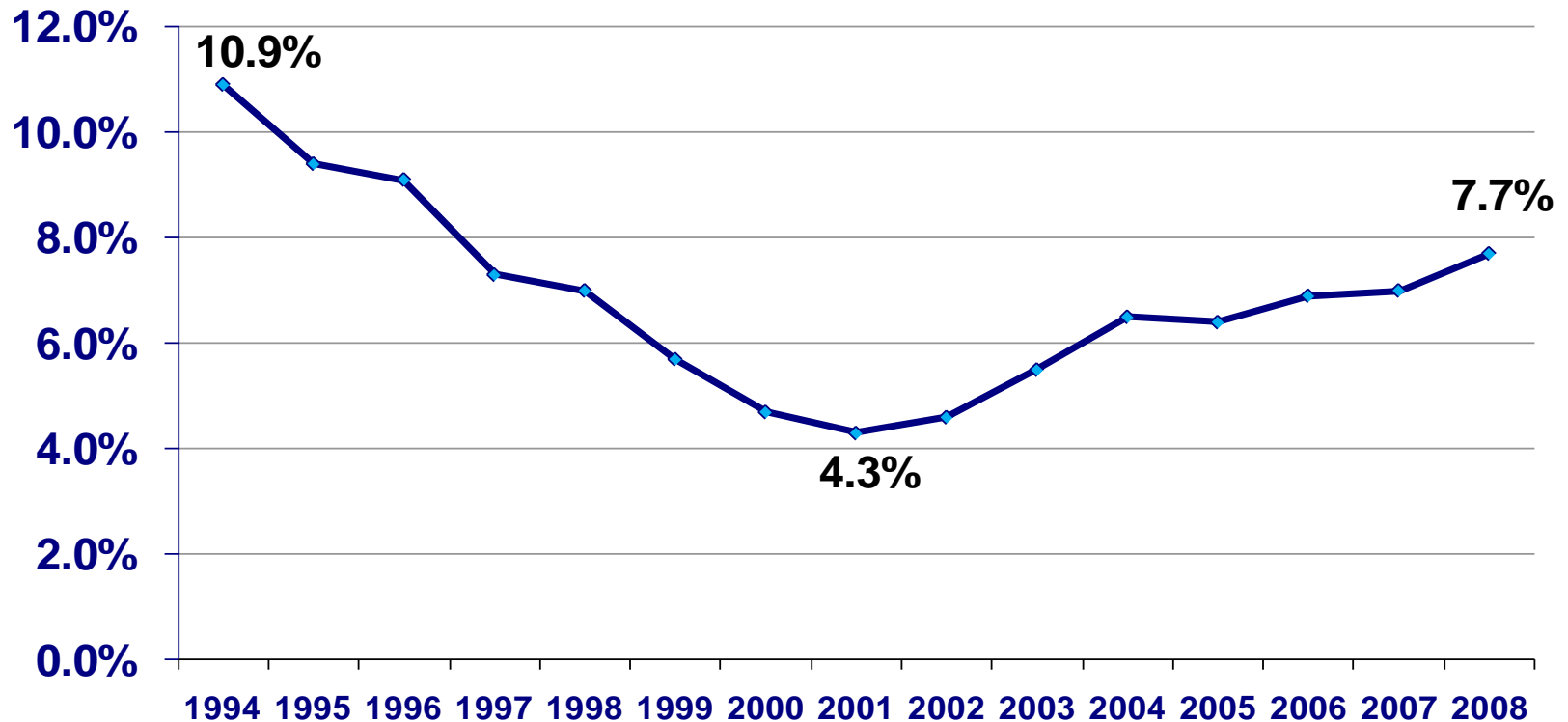
**November 15, 2010**

# Children's Health – A Key Policy Priority

- **Children have unique health needs.**
- **All children should have comprehensive benefits and child-focused coverage standards, like those available through RIte Care.**
- **Public and private insurance options should promote coverage features that matter most for kids:**
  - Access to primary and specialty care,
  - High quality care, and
  - Dependable care.
- **Children's Health =**
  - Medical / Physical
  - Dental
  - Behavioral/Mental
  - Developmental



# Uninsured Children in Rhode Island, 1993-2008



Source: US Census Bureau, Current Population Survey, 1993-2008, three-year averages. Data are for children under 18 years of age. Prepared by Rhode Island KIDS COUNT, 2010.

# Earning an A+ in staying healthy



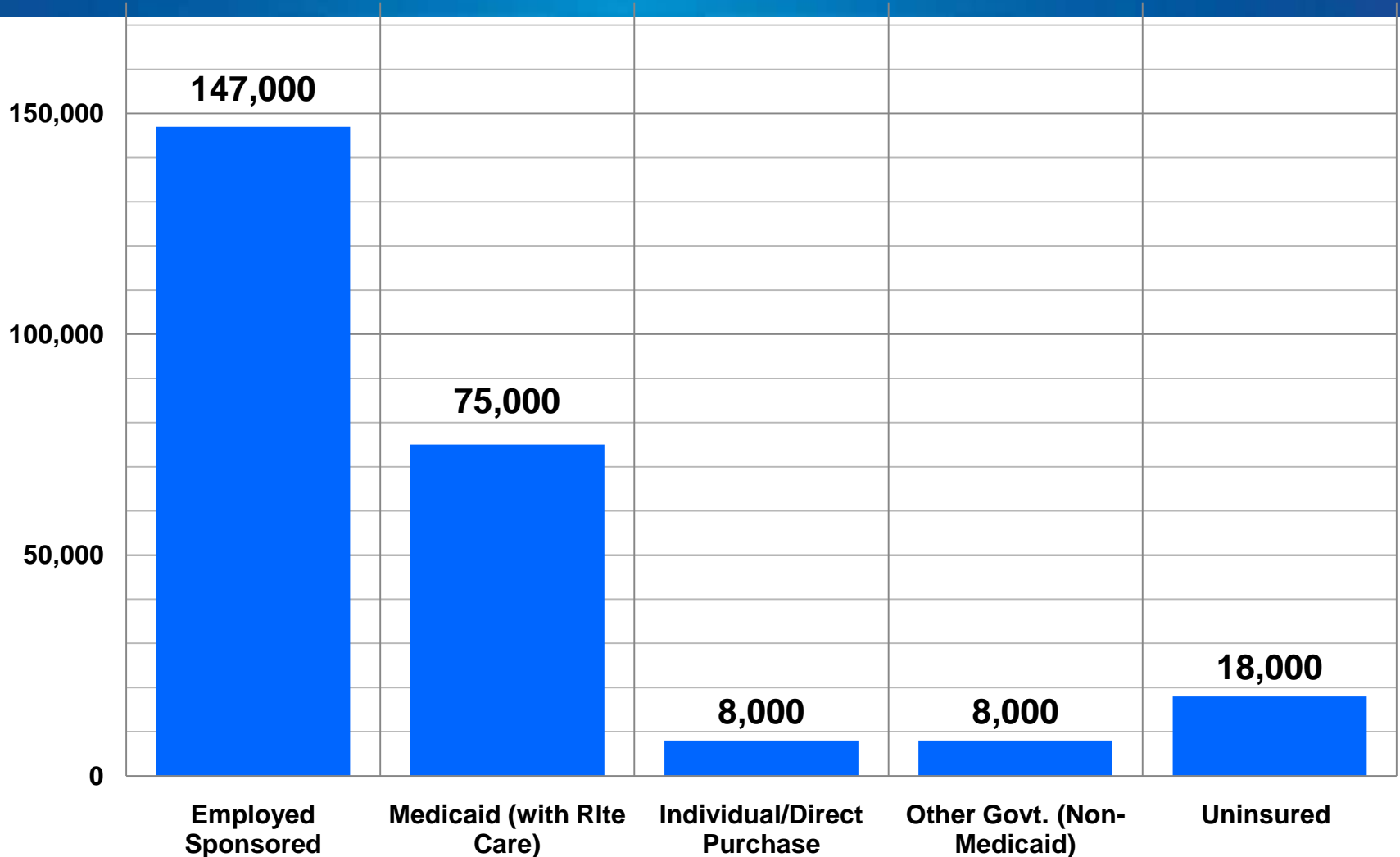
## Health coverage means:

- Children and teens stay in the classroom. Parents can go to work, supporting their families.
- Whether it's glasses to see the blackboard or an asthma inhaler for soccer practice, kids get the care they need to grow up healthy and strong.
- Rhode Island benefits from putting our young people on the path to success in school and later in life. Our workforce is healthier and able to produce.

Over **9** in 10 Rhode Island kids have health insurance



# How are Children Covered?



Source: Rhode Island KIDS COUNT analysis of the U.S. Census Bureau, Current Population Survey, 2007-2009, RI, three-year average

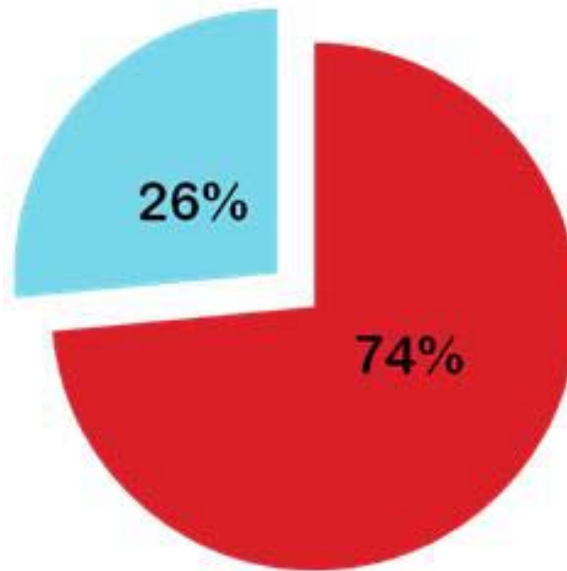
# Who are the Uninsured Children?

## Children Under Age 19 Without Health Insurance, by Poverty Level, Rhode Island

**26% Not Income-Eligible for Rlte Care (5,116)**

**Above 250% FPL (over \$44,000/yr for family of 3)**

**They live in families who are not offered or cannot afford ESI.**



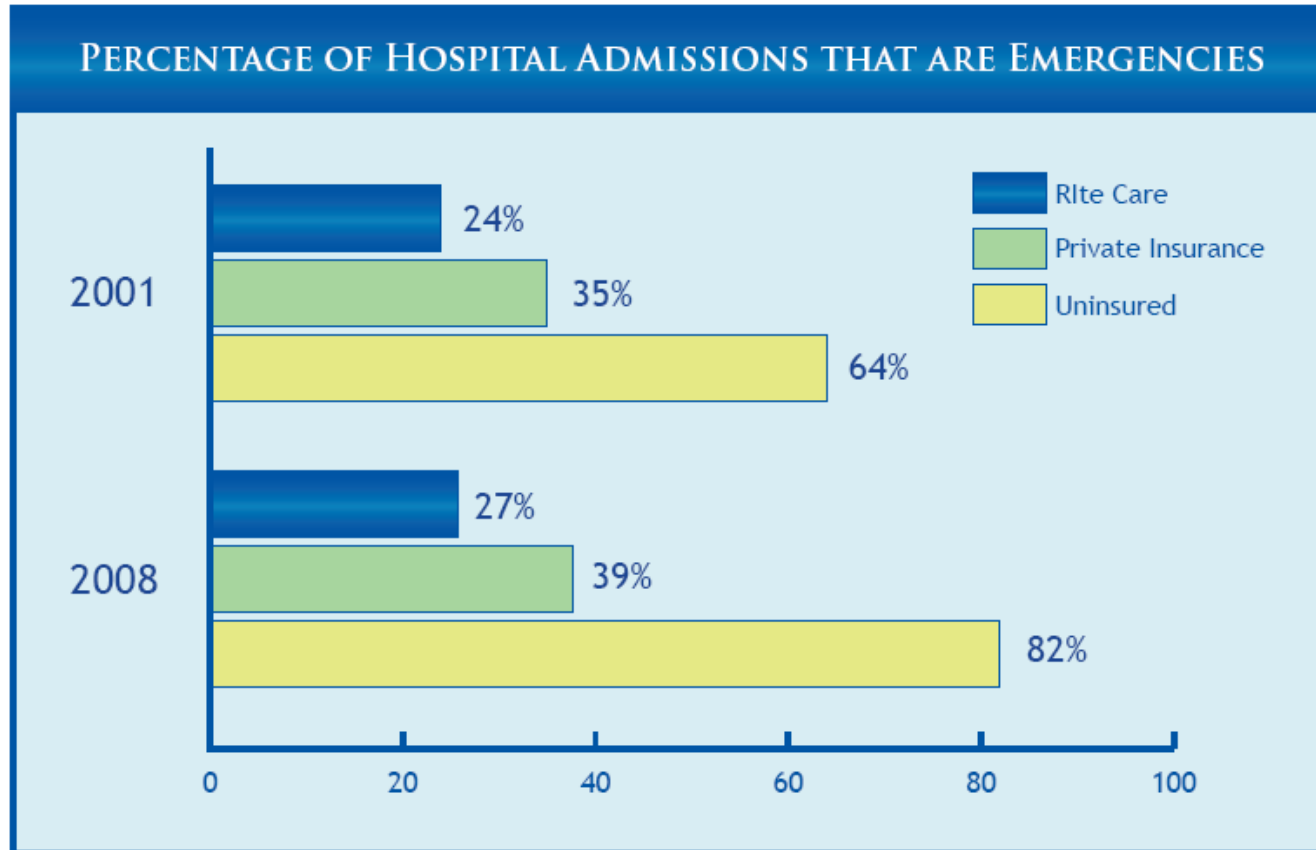
*n= 19,675*

**74% Income-Eligible for Rlte Care (14,560)**

**Under 250% FPL (less than \$44,000/yr for family of 3)**

**They live in families that do not know about Rlte Care, who cannot afford Rlte Care premiums, face administrative barriers or are eligible due to immigration status.**

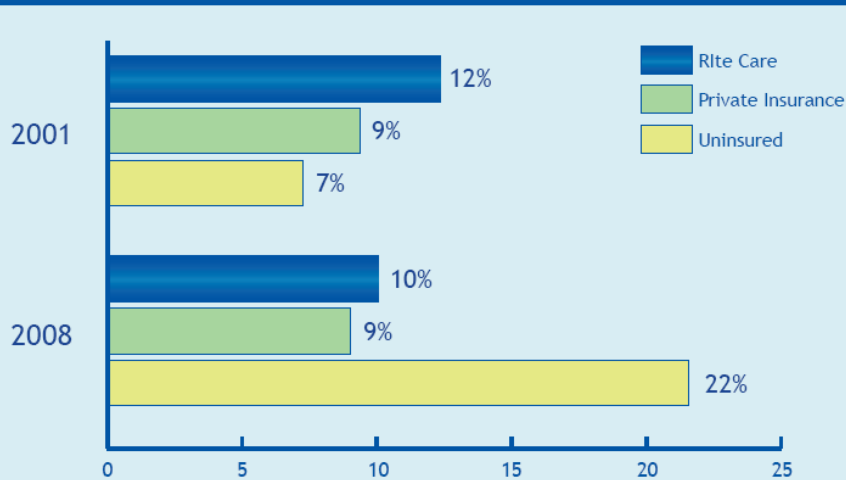
# Rite Care Works for Families



Children and adults enrolled in Rite Care have the lowest percentage of emergency admissions.

# Rite Care Works for Families

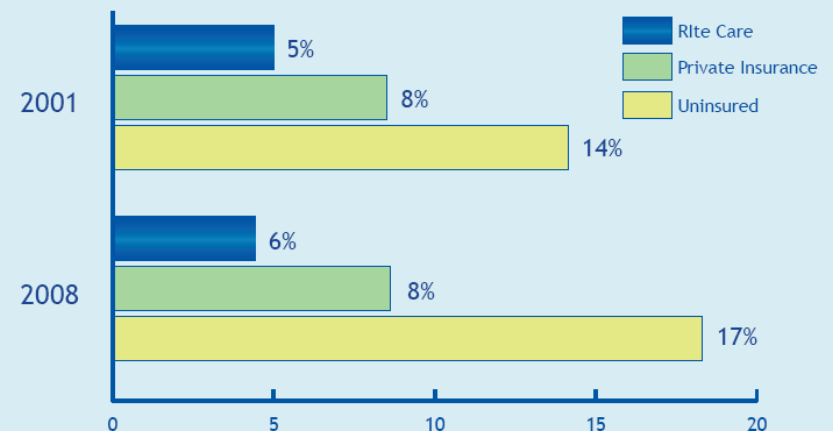
PREVENTABLE HOSPITALIZATIONS FOR CHILDREN UNDER AGE 18



Children enrolled in Rite Care and those with private insurance have fewer preventable hospitalizations than uninsured children.

Parents enrolled in Rite Care have the lowest rates of preventable hospitalizations.

PREVENTABLE HOSPITALIZATIONS FOR ADULTS AGES 18-64



# Rite Care Works for Pregnant Women



***Rite Care for pregnant women means regular health care before and during pregnancy, lower incidence of smoking and fewer babies with health problems.***



# RItE Care Works for Babies



- The low birthweight rate has increased less among babies with RItE Care coverage than those with private coverage.
- Rhode Island's infant mortality rate for publicly-insured infants dropped from 9.8 infant deaths per 1,000 live births in 1993 to 6.7 in 2008.

# Rite Care Works for Children

- **99%** of infants and toddlers receive periodic visits with their primary health care provider.
- **95%** of preschool and early elementary school children receive periodic visits with a primary health care provider.
- **84%** of children have been screened for lead poisoning.



Source: Results of 2010 HEDIS and CAHPS Measures in Rite Care's Performance Goal Program as reported in *Monitoring Quality and Access in Rite Care*, DHS/EOHHS, October 2010

# Rite Care Works for Parents

- Children have better access to care when their parents also have health coverage.
- **90%** of parents enrolled in Rite Care have had an ambulatory or preventive care visit.
- **90%** of pregnant Rite Care members get timely prenatal care.

Source: Results of 2010 HEDIS and CAHPS Measures in Rite Care's Performance Goal Program as reported in *Monitoring Quality and Access in Rite Care*, DHS/EOHHS, October 2010

# Health Reform Helps Rhode Island Children

- RIte Care eligibility protected until 2019
- RIte Care premiums remain at today's levels through at least June 2011
- Preventive services will be free under new commercial plans
- No denials of coverage for children with pre-existing conditions
- Young adults can stay on parent's private coverage until age 26
- No lifetime caps or restrictive annual limits
- Insurers cannot drop coverage for children or parents if they get sick



# Our Work Ahead



- Maintain our commitment to covering every child.
- Maintain our high quality delivery system.
- Find and enroll every eligible but uninsured child.
- Make the Affordable Care Act work for children and families.

# Health Coverage for Children and Families in Rhode Island



## **Rite Care is our success story**

Our investments in Rite Care have resulted in a highly successful, cost-efficient program for children and families who do not have access to health insurance any other way.

## **Maximize federal resources**

Medicaid, CHIPRA and the Affordable Care Act provide support for states to build on our strengths and to move our health coverage options to the next level.

## **A top priority**

In these tough economic times, it's more important now than ever.

# Connecting Kids to Coverage



- U.S. Secretary of Health and Human Services Kathleen Sebelius - “Connecting Kids to Coverage” challenge
- Enroll the 5 million uninsured children in the U.S. who are currently eligible for, but not yet enrolled, in Medicaid and CHIP over the next 5 years.
- Most Rhode Island children who are uninsured in Rhode don’t have to wait for the Affordable Care Act to be implemented in 2014.
- Eligible children can be enrolled in RItE Care right now to get the health coverage they need to grow and thrive.

# A Celebration of Children's Health

