

# Providence Data in Your Backyard

## 2008 Rhode Island KIDS COUNT Factbook



Presented by Elaine Budish  
Research Analyst, Rhode Island KIDS COUNT  
June 13, 2008



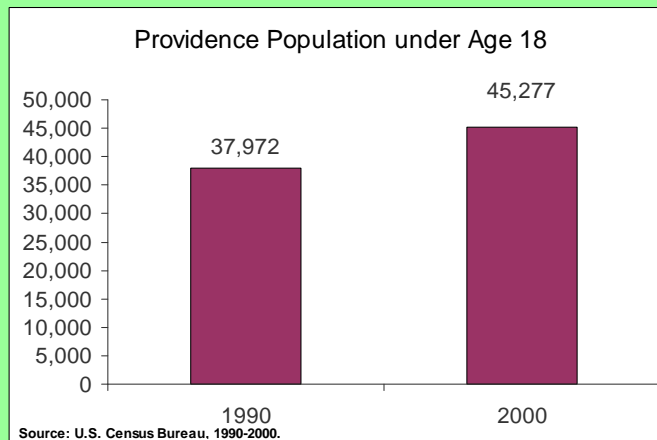
The 2008 Factbook is the 14th annual publication.

The 2008 Factbook contains 62 indicators of child well-being.  
Most include city and town level information.

## Family and Community

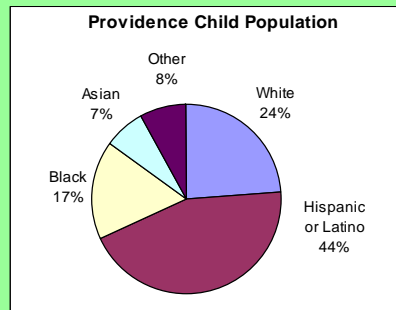


## Providence's Child Population



❖ The child population of Providence increased by 19% (7,305) between 1990 to 2000.

## Providence's Child Population, By Race & Ethnicity, 2000

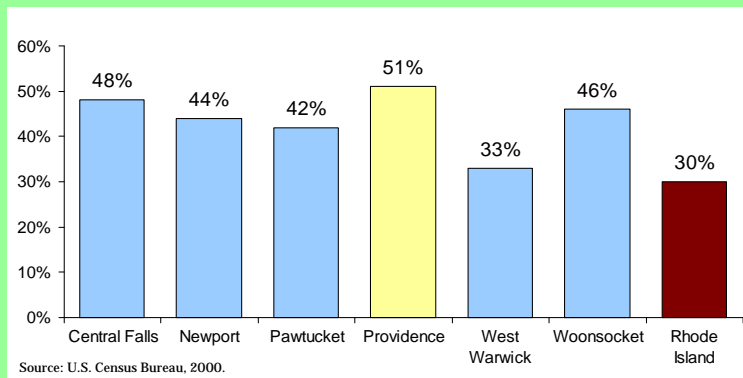


### Population Under 18 Years of Age

Hispanic or Latino	20,350
White, non-Hispanic	10,858
Black, non-Hispanic	7,606
Asian	3,043
Two or More Races	2,205
Other	<u>1,215</u>
<b>Total</b>	<b>45,277</b>

Source: U.S. Census Bureau, Census 2000.

## Children in Single-Parent Families

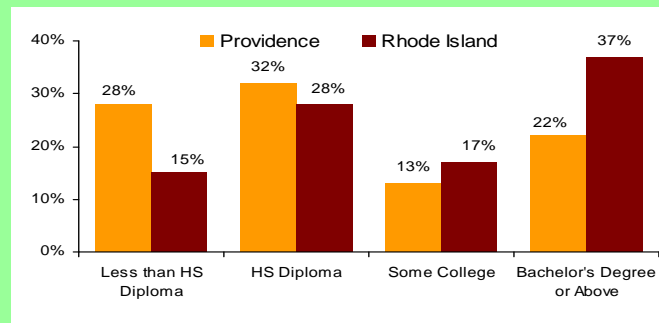


- ❖ In 2000, 20,546 (51%) children in Providence lived in single-parent families, representing the highest percentage in the state.
- ❖ In 2006, 33% of Rhode Island children lived with a single parent, compared with 29% nationally. Rhode Island ranked 44th out of 50 states (where 1st is best) in the U.S. for the highest rate of children living in single-parent families.
- ❖ In 2006, 82% of all poor children in Rhode Island lived in a single-parent family.
- ❖ In 2006, 78% of all families with incomes below \$14,000 were headed by single females, 8% were headed by single males, and 14% were two-parent families.

## Grandparents Caring for Grandchildren

- ❖ In 2006, 12,423 children in Rhode Island lived in households headed by grandparents. An additional 7,102 children lived in households headed by other relatives. In total, 8% of all children living in Rhode Island lived with relative caregivers.
- ❖ According to the American Community Survey, 6,116 Rhode Island grandparents were financially responsible for their grandchildren in 2006.
- ❖ More than one-third (36%) of Rhode Island grandparents who were financially responsible for their grandchildren in 2006 had been responsible for the children for three or more years.
- ❖ In Providence in 2000, 3,322 grandparents lived in households with their grandchildren. Almost 2 in 5 (37%) of these grandparents were financially responsible for their grandchildren.

## Mother's Education Level, 2002-2006



Source: Rhode Island Department of Health, Division of Family Health, Maternal and Child Health Database, 2002-2006.

- ❖ Research shows strong links between parental education levels and a child's school readiness, health, and the level of education that the child is likely to achieve.
- ❖ In Providence, 28% of new mothers had less than a high school diploma, significantly higher than the state average of 15%. The proportion of new mothers with a Bachelor's degree or above is smaller in Providence (22%) than in the state as a whole (37%).

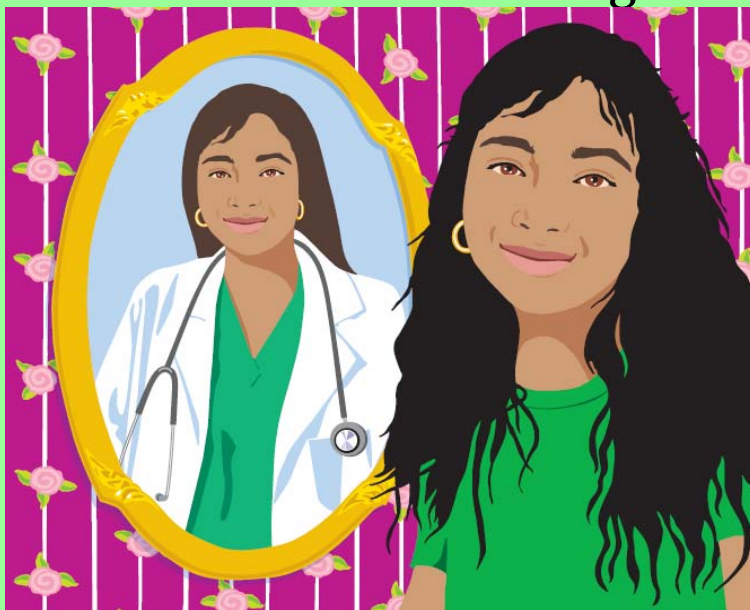
## Infants Born at Highest Risk, 2007

	# of Births	# Born at Risk	# Born at Highest Risk
Central Falls	380	365	40 (11%)
Newport	308	265	17 (6%)
Pawtucket	1,166	1,078	86 (7%)
<b>Providence</b>	<b>2,936</b>	<b>2,797</b>	<b>277 (9%)</b>
West Warwick	409	356	10 (2%)
Woonsocket	653	602	47 (7%)
<b>Rhode Island</b>	<b>12,010</b>	<b>10,372</b>	<b>648 (5%)</b>

Source: Rhode Island Department of Health, KIDSNET Database, 2007.

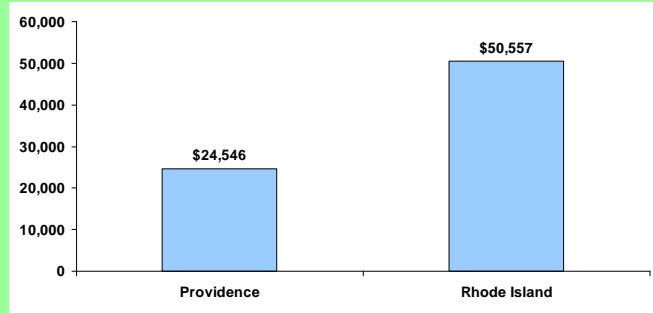
- ❖ There are three important social and economic risk factors present at birth that, when combined, strongly predict childhood poverty and poor education outcomes: having a mother who is younger than 20, unmarried, and without a high school degree.
- ❖ In 2007, 5% of babies were born to Rhode Island teen mothers who were unmarried, and without a high school diploma.
- ❖ In Providence, 9% of babies were born at highest risk—the second highest in the state after Central Falls.

## Economic Well-Being



# Median Family Income

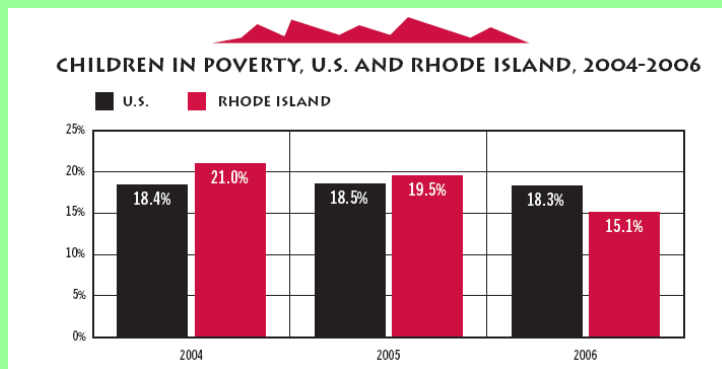
Families With Children Under Age 18, 1999



Source: U.S. Census Bureau, 2000.

- ❖ The median family income in Providence was \$24,546 in 2000, more than \$26,000 less than the state median family income of \$50,557. The 2006 RI median family income was \$64,733.
- ❖ In Rhode Island in 2006, the median family income for families with children was \$81,545 for two-parent families, \$45,384 for male-headed single-parent households and \$26,023 for female-headed single-parent households.
- ❖ The Poverty Institute's *2006 Rhode Island Standard of Need* states that a two-parent family with two children in which both parents are working would need an income of **\$47,196** (without subsidies) to pay basic living expenses, including housing, food, clothing, health insurance, child care and transportation.

# Child Poverty in Rhode Island, 2006

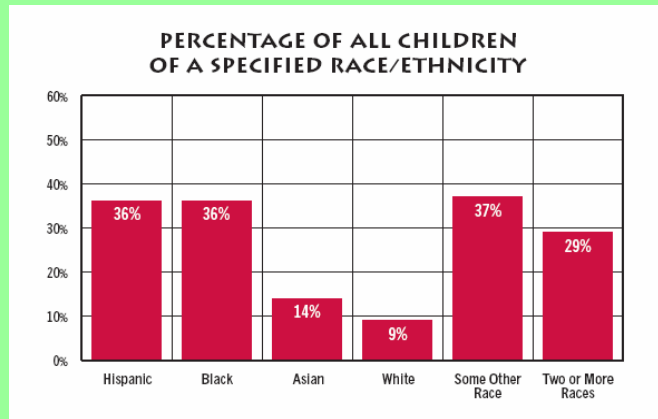


❖ According to ACS 2006, 15.1% (35,456) of Rhode Island's 234,711 children under age 18 lived below the federal poverty threshold. This is a significant decrease from 2004 when 21.0% (50,390) of Rhode Island children were living below the federal poverty threshold.

❖ Of the 35,456 children living in poverty, 43% lived in extreme poverty. In total, an estimated 6.5% (15,160) of all children in Rhode Island lived in extreme poverty. This is a decrease from the previous year when 10% of all Rhode Island children lived in extreme poverty.

Source: U.S. Bureau of the Census, American Community Survey, 2006.

## Poverty by Race & Ethnicity, 2006



- ❖ While nearly half (44%) of all poor children in Rhode Island are White, children who are Hispanic or Black 3 times more likely to be living in poverty than their White peers.
- ❖ Between 2005 and 2006 in Rhode Island, the child poverty rate dropped among children of all racial and ethnic backgrounds, with particularly large decreases among Hispanic and Black children.

Source: U.S. Bureau of the Census, American Community Survey, 2006.

## Children in Poverty in Providence

### Children under Age 18 in Low-Income Families, 2000

	<50% FPL	<100%FPL	<200% FPL
<b>Central Falls</b>	1,146 (21.2%)	2,210 (40.9%)	3,875 (71.7%)
<b>Newport</b>	773 (14.9%)	1,267 (24.4%)	2,223 (42.8%)
<b>Pawtucket</b>	2,195 (12.2%)	4,542 (25.3%)	9,047 (50.4%)
<b>Providence</b>	<b>8,846 (19.9%)</b>	<b>18,045 (40.5%)</b>	<b>29,796 (66.9%)</b>
<b>West Warwick</b>	462 (7.0%)	1,186 (18.1%)	2,655 (40.5%)
<b>Woonsocket</b>	2,061 (18.8%)	3,494 (31.8%)	5,961 (54.3%)
<b>Rhode Island</b>	19,773 (8.1%)	41,162 (16.9%)	83,420 (34.2%)

Source: U.S. Bureau of the Census, 2000

- ❖ According to the American Community Survey 2006, **35.7%** of children in Providence were living in poverty (<100%FPL).

- ❖ The poverty level in 2006 was family income below \$16,242 for a family of three with two children and \$20,444 for a family of four with two children.
- ❖ The extreme poverty level in 2006 was family income below \$8,121 for a family of three with two children and \$10,222 for a family of four with two children.
- ❖ The low-income level in 2006 was family income below \$32,484 for a family of three with two children and \$40,888 for a family of four with two children.

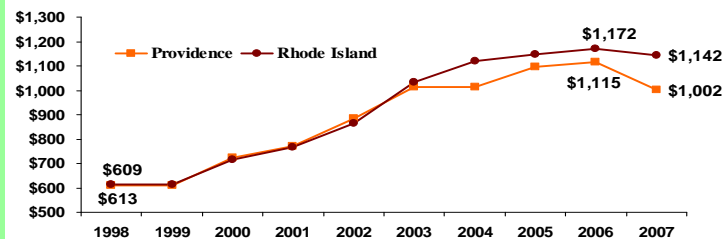
# Young Children in Poverty

## Children under Age 6 in Low-Income Families, 2000

	<50% FPL	<100%FPL	<200% FPL
<b>Central Falls</b>	357 (20.6%)	740 (42.7%)	1,313 (75.7%)
<b>Newport</b>	413 (22.6%)	628 (34.3%)	909 (49.7%)
<b>Pawtucket</b>	824 (14.1%)	1,711 (29.2%)	3,132 (53.5%)
<b>Providence</b>	<b>3,252 (22.5%)</b>	<b>6,137 (42.5%)</b>	<b>10,010 (69.3%)</b>
<b>West Warwick</b>	239 (10.6%)	606 (26.8%)	1,209 (53.4%)
<b>Woonsocket</b>	772 (19.9%)	1,361 (35.0%)	2,244 (57.8%)
<b>Rhode Island</b>	7,230 (9.5%)	14,548 (19.2%)	28,282 (37.3%)

# Cost of Rent

Average Cost of a Two Bedroom Apartment  
1998-2007

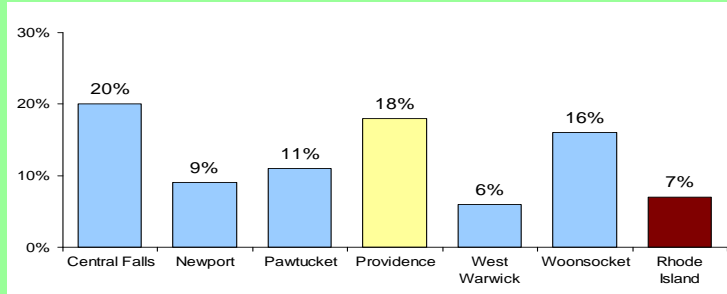


Source: Rhode Island Department of Housing and Urban Development Rent Survey, 1998-2006.

- ❖ To afford the average rent in Rhode Island of \$1,142 without a cost burden, a worker would need to earn \$19.77 per hour for 40 hours a week. This is almost 3 times the state's minimum wage of \$7.40 per hour.
- ❖ With a household income of \$50,000, a family cannot afford to buy a median-priced, single family home in any community in the state.
- ❖ In 2007, the average cost of housing in Providence was **\$1,002**. A family of three living at the poverty level in Providence would have to devote 70% of their household income to the cost of rent. Housing is considered to be affordable if it consumes 30% or less of a family's household income.

# Family Independence Program

## Children Enrolled in the Family Independence Program (FIP), Core Cities and Rhode Island, 2007

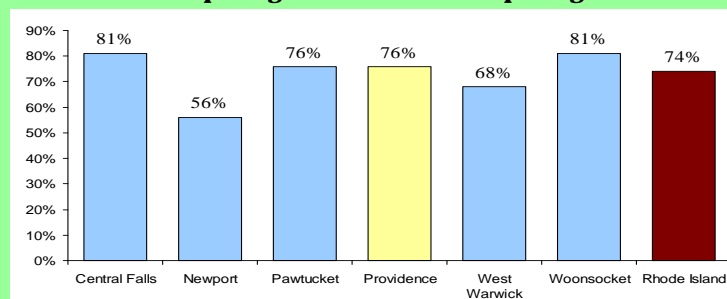


Source: Rhode Island Department of Human Services, 2007 and U.S. Census 2000.

- ❖ Between 2000 and 2007, there was a 46% decline in the FIP caseload.
- ❖ As of December 1, 2007 4,304 Providence families with 8,091 children were enrolled in FIP. Providence has the second highest enrollment rate (18%) for low-income children in the state.
- ❖ As of December 2007, there were 6,242 adults and 17,808 children under the age of 18 in Rhode Island enrolled in the Family Independence.
- ❖ Nearly three-quarters (74%) of all Family Independence Program beneficiaries are children under the age of 18. Almost half (44%) of children enrolled in FIP are under the age of six.

# Children Receiving Food Stamp Benefits

## % of Income Eligible Children under Age 18 Participating in the Food Stamp Program

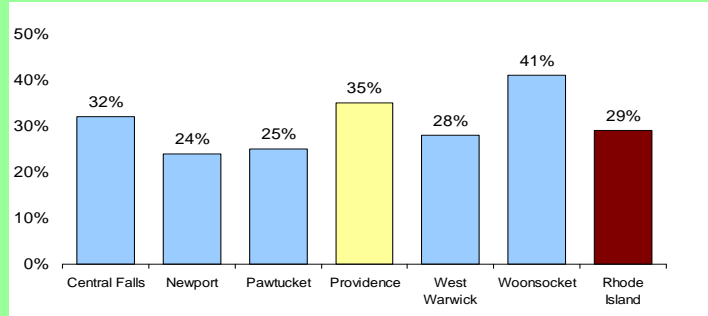


Source: Rhode Island Department of Human Services, 2006.

- ❖ In October, 2007, 76% of income-eligible children in Providence participated in the Food Stamp Program, compared to 74% statewide. The 2006 Providence rate was 73%.
- ❖ Research shows that hunger and lack of regular access to sufficient food are linked to serious health, psychological, emotional and academic problems in children and can impede their healthy growth and development.

## School Breakfast Program

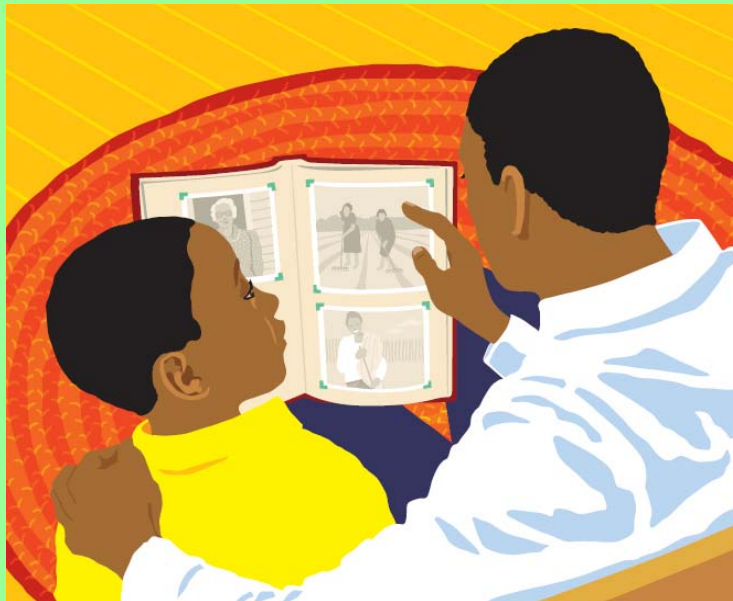
*% of Eligible Low-Income Children Participating in School Breakfast, 2007*



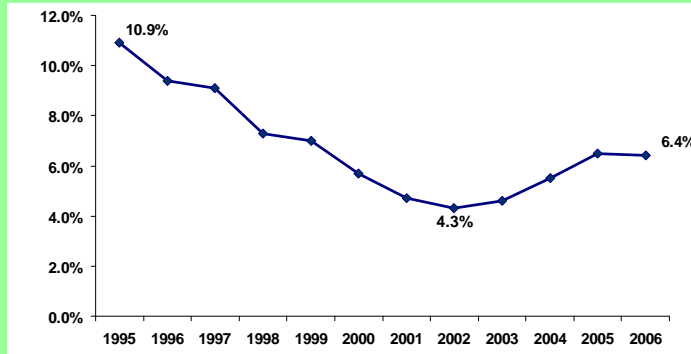
Source: Rhode Island Department of Elementary and Secondary Education, October 2007.

- ❖ In October 2007, an average of 8,274 (35%) low-income children in Providence participated in the Universal School Breakfast Program each day out of 23,950 who were eligible for free or reduced-price breakfast. The participation rate in the program is the second highest in the state.
- ❖ Students who eat breakfast have significantly higher math and reading scores, fewer absences, improved attentiveness and lower incidences of social and behavioral problems.

## Health



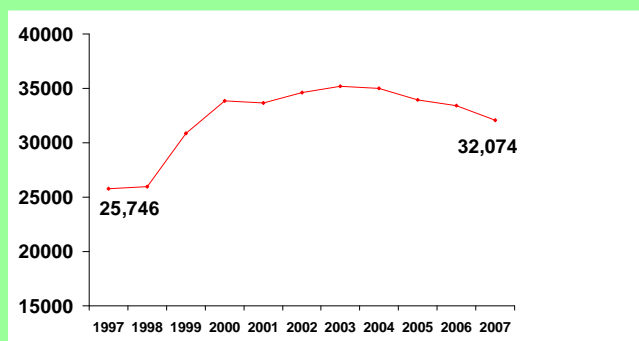
## Children without Health Insurance, Rhode Island, 1995-2006



Source: U.S. Bureau of the Census, Current Population Survey, 1994-2007, three-year averages, compiled by Rhode Island KIDS COUNT. Data are for children under 18 years of age.

- ❖ In Rhode Island in 2006, 6.4% of children under age 18 were uninsured, lower than the national rate of 11.1%. Rhode Island ranks 10th best in the country for lowest percentage of children uninsured.
- ❖ In Rhode Island, the percentage of uninsured children in the last three years has increased, largely due to the decline in employer sponsored health insurance.

## Children Receiving Medical Assistance Children Under Age 19 Receiving Medical Assistance, Providence, 1997-2007

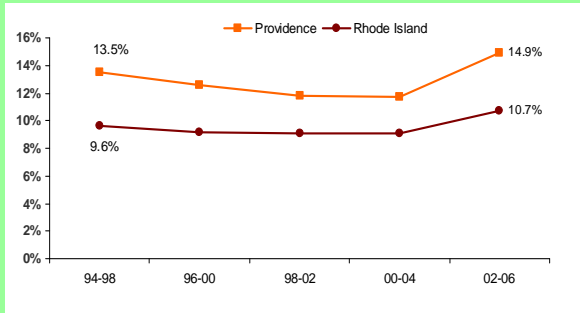


Source: Rhode Island Department of Human Services 1997-2007.

- ❖ In 2007, 27,958 children in Providence received RIte Care assistance and 4,116 received medical assistance through SSI, adoption subsidy, foster care or Katie Beckett provision.

# Women with Delayed Prenatal Care

Women with Late or No Prenatal Care, 1994-2006



## Core Cities 2002-2006

Central Falls	15.8%
Newport	13.1%
Pawtucket	13.5%
<b>Providence</b>	<b>14.9%</b>
West Warwick	10.4%
Woonsocket	14.9%
Rhode Island	10.7%

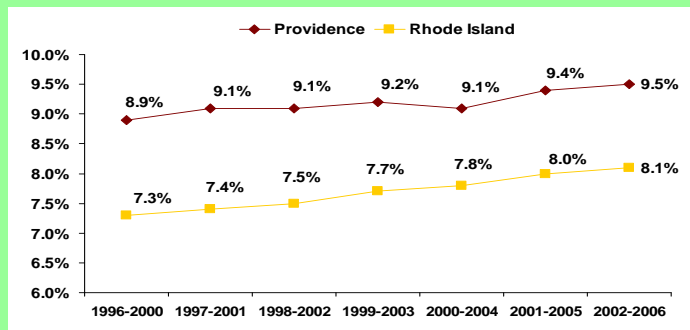
Source: Rhode Island Department of Health, 1991-2006.

❖ Between 2002 and 2006, there were 14,943 births to women living in Providence. Of these births, 2,233 (14.9%) of the mothers received delayed prenatal care. This is an increase from 1999-2003 when 11.3% of Providence mothers received delayed prenatal care.

❖ Despite overall decreases in the past decade, between 2002 and 2006, Providence still has a significantly higher rate of women receiving delayed prenatal care than the state average and is tied with Woonsocket for the second highest rate in the state. Women in the core cities are more than twice as likely to receive delayed prenatal care as women in the remainder of the state (7.6%).

# Low Birthweight Infants

Percentage Low Birthweight, 1996-2006



Source: RI Department of Health, Division of Family Health, Maternal and Child Database, 1996-2006.

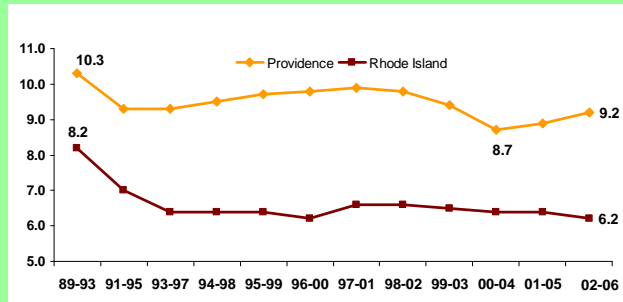
❖ A baby's birthweight is a key indicator of newborn health and is directly related to infant survival and healthy development. Increased risk of low birthweight is associated with maternal poverty, smoking and low levels of educational attainment.

❖ Between 1996-2000 and 2002-2006, the percentage of infants born low birthweight in Providence increased steadily from 8.9% to 9.5%. Providence's low birthweight rate is tied with East Providence and Woonsocket for the highest in the state.

❖ Access to early prenatal care can help reduce the risk of infants being born low birthweight and decrease the risk of other poor birth outcomes, such as infant mortality and prematurity.

# Infant Mortality

## Number of Infant Deaths 1989-2006

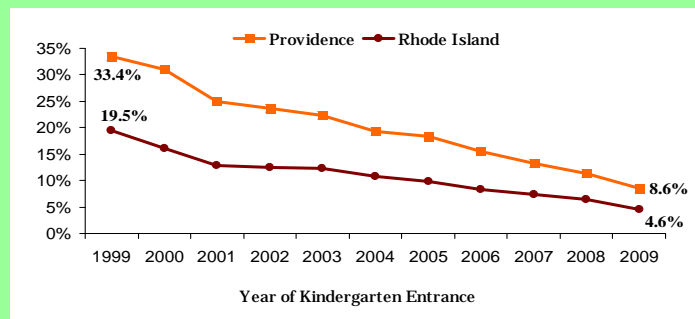


Source: Rhode Island Department of Health.

- ❖ Communities with multiple problems of poverty, unemployment and low education levels tend to have higher infant mortality rates than more advantaged communities. Access to early prenatal care can help reduce certain health risks to infants.
- ❖ Over the past decade, Rhode Island's infant mortality rate declined for White, Black and Hispanic infants, but increased for Asian infants. The Native American infant mortality rate, 7.6 per 1,000 births, and the Black infant mortality rate (12.3) are both more than the rate for White infants (5.5).
- ❖ Providence has the second-highest infant mortality rate in the state.

# Children with Elevated Lead Levels

*Children with a history of screened blood levels  $\geq 10$  mcg/dL, 1999-2008*

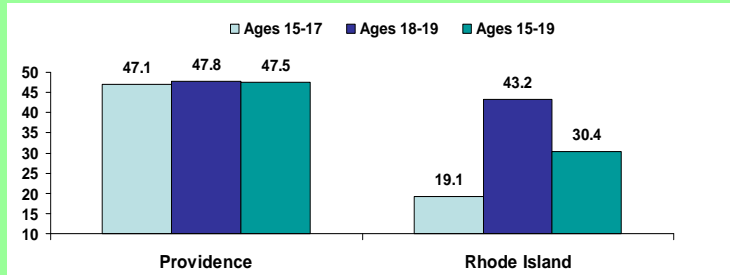


Source: Rhode Island Department of Health 1999-2009.

- ❖ Despite declines in lead poisoning rates, kindergarten children living in core cities are more likely to have a history of elevated blood lead levels (6.0%) as those in the remainder of the state (1.6%).
- ❖ In the most recent year of testing, 3,133 Providence children were screened for lead, 268 (8.6%) screened positive and 251 (8.0%) confirmed positive for lead levels  $\geq 10$ mcg/dL.

# Births to Teens

## Births per 1,000 girls ages 15-19, 2002-2006

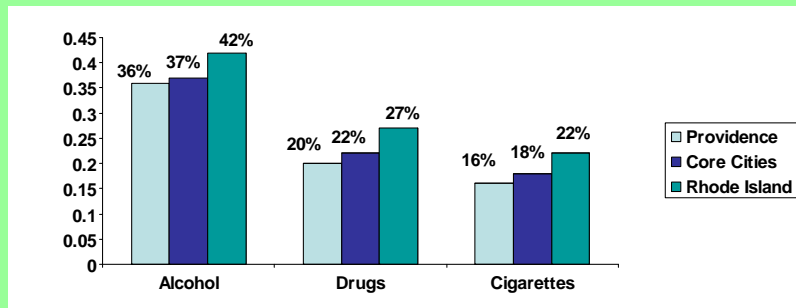


Source: Rhode Island Department of Health, 1999-1995 & 2002-2006.

- ❖ The teen birth rate per 1,000 teen girls ages 15-19 is higher in Providence (47.5) than the state average (30.4). The teen birth rate for teens ages 18-19 is slightly higher in Providence (47.8) compared to the state rate (43.2).
- ❖ Although the teen birth rate in Providence has decreased in the last two decades for minor teens (ages 15-17) from 74.3 to 47.1 births per 1,000 teens, it is still more than double the state rate (19.1).
- ❖ Since the early 1990's, the teen birth rate for Rhode Island girls ages 15 to 19 has declined by 22% mirroring the national trend. Despite the decreases, teen girls in the core cities give birth at more than 3 times the rate of girls of the same age in the remainder of the state.
- ❖ Between 2002 and 2006 in Rhode Island, almost one in five teen births (18%) were to teens who were already mothers (repeat birth).

# Alcohol, Drug and Cigarette Use by Teens

## High School, 2006-2007



Source: Rhode Island SALT Survey reports, student reports of health risk practices by grade level, 2006-2007.

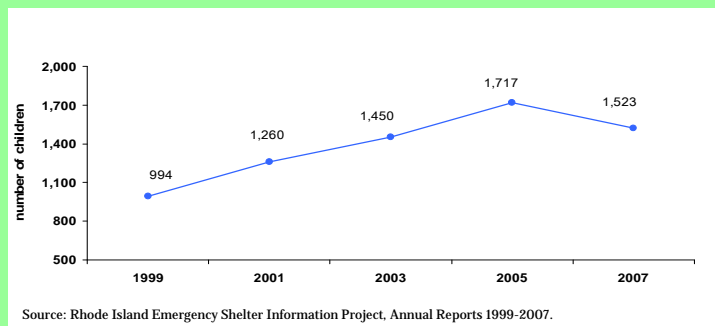
- ❖ In Providence, 36% of high school students reported using alcohol in the previous month, compared to 42% of high school students statewide.
- ❖ In Providence, nearly one in three (20%) of high school students reported using illegal drugs such as marijuana, inhalants, cocaine and methamphetamines, compared to 27% of students statewide.
- ❖ Rates of reported drug and cigarette use by teens is lower in Providence (16%) than in the state as a whole (22%).

# Safety



## *Homeless Children & Youth*

*Children and Youth Living in Shelters, RI, 1999-2007*



- ❖ In 2007, 1,193 children under age 13 received emergency housing in a homeless shelter or a domestic violence shelter in RI. 330 youth ages 13-17 entered the emergency shelter system accompanied by an adult.
- ❖ In Rhode Island, between July 1, 2006 and June 30, 2007, 766 families sought emergency shelter. Of these families, nearly one quarter (23%) were employed and earning income.
- ❖ Of families seeking shelter, 90% were female-headed households. Of these households, 52% reported staying with family and friends prior to seeking shelter.

## Juveniles Referred to Family Court

- ❖ Of the wayward and delinquent offenses referred to Family Court in Rhode Island during 2007, 71% were committed by males and 29% by females.
- ❖ 45% of offenses were committed by youth between the ages of 16-17, 37% by youth ages 14 and 15, 17% by youth ages 13 or younger, and less than 1% by youth over age 17.
- ❖ In 2007, 8,301 wayward or delinquent offenses were referred to Family Court.

26% - property crimes	5% - traffic offenses
19% - status offenses	5% - violent crimes
19% - disorderly conduct	3% - weapons offenses
10% - simple assault	5% - Other
8% - alcohol and drug offenses	

Source: Rhode Island Department of Children, Youth, and Families, 2007.

## Juveniles at the Training School

Highest Level Current Charges of Youth Incarcerated at the Training School, January 2008

CHARGE	# BOYS	% BOYS	# GIRLS	% GIRLS
Crimes against property	24	22%	1	8%
Felony assault	20	18%	2	15%
Violation of probation	20	18%	0	---
Illegal substance-related crime	13	12%	2	15%
Simple assault	7	6%	3	23%
Obstruction, resist, escape	6	5%	1	8%
Possession of a weapon	6	5%	3	23%
Sex crime	4	4%	0	---
Traffic: Driving w/out a license, DUI	2	2%	1	8%
Unknown charge	8	7%	0	---
<b>Total Youth*</b>	<b>110</b>	<b>100%</b>	<b>13</b>	<b>100%</b>

Source: Rhode Island Department of Children, Youth and Families, week of January 14, 2008. \*Data were gathered for the 110 boys adjudicated to the RITS and the 13 girls in residence at the RITS (9 adjudicated and 4 detained).

- ❖ **In 2007, 385 youth from Providence passed through the training school. In Rhode Island, a total of 1,062 youth passed through to the Training School in 2007.**

## Children of Incarcerated Parents

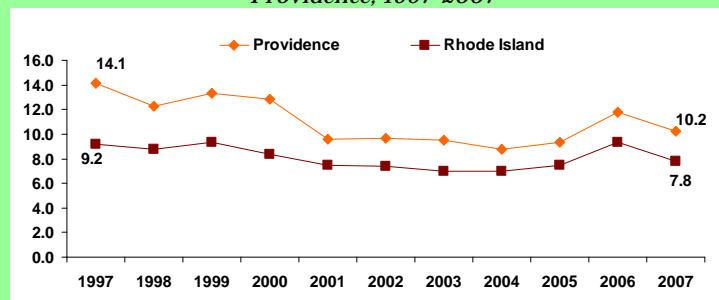
	# of Parents	# of Children Reported	Rate per 1,000 Children
<b>Central Falls</b>	58	131	23.7
<b>Newport</b>	40	88	16.9
<b>Pawtucket</b>	125	265	14.6
<b>Providence</b>	<b>561</b>	<b>1,300</b>	<b>28.7</b>
<b>West Warwick</b>	52	101	15.2
<b>Woonsocket</b>	110	259	23.2
<b>Rhode Island</b>	1,387	3,072	12.4

Source: Rhode Island Department of Corrections, September 30, 2007.

- ❖ On September 30, 2007, 1,387 incarcerated parents in Rhode Island reported having 3,072 children. In Rhode Island, the rate of children reported by a parent serving a sentence at the Rhode Island Department of Corrections as of September 30, 2007 was 12.4 per 1,000 children.
- ❖ In 2007, 561 adults incarcerated in Rhode Island whose last known residence was Providence reported having 1,300 children, a rate of 28.7 per 1,000 children, which is the highest in the state.
- ❖ While women only comprise 5% of the total inmate population in Rhode Island, they are the faster growing group in the prison population, with an increase of 1140% over the last 30 years.

## Child Abuse & Neglect

*Indicated Investigations of Child Abuse and Neglect per 1,000 children, Providence, 1997-2007*



Source: Rhode Island Department of Children, Youth and Families, 1997-2007.

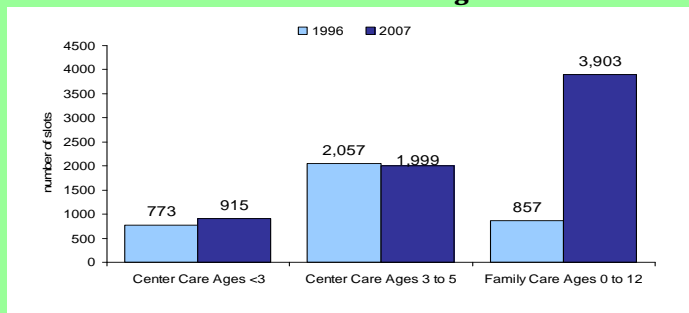
- ❖ In 2007 in Rhode Island, there were 2,337 (7.8 per 1,000 children) indicated investigations of child abuse and neglect.
- ❖ Providence had 633 indicated investigations of child abuse and neglect in 2007. While the rate of indicated cases per 1,000 children for Providence has declined since 1994 and is below the rate for the core cities (11.5), it is higher than the state rate of 7.8.
- ❖ 58% of indicated investigations of child abuse and neglect in 2007 occurred in the six core cities, even though only 39% of the states' population under 21 lives in those communities.

# Education



## Early Care & Education

### Child Care for Children under Age 6 in Providence



Source: Rhode Island Department of Children Youth and Families, December 2007.

- ❖ In 2007 in Rhode Island, there were 24,417 slots for children under age 6 in licensed child care centers and certified family child care homes.
- ❖ In 2007 in Providence, there were 6,817 slots for children under age 6 in licensed child care centers and certified family child care homes, an 85% increase from 3,687 slots in 1995.
- ❖ There were 2,831 licensed after school slots in Providence for 6-12 year olds in 2007.
- ❖ National data indicate that Latino children under age 5 are less likely to be enrolled in center-based early care and education programs than other racial/ethnic groups. In Rhode Island, 58% of certified family child care home providers speak Spanish and 22% of all licensed centers have at least one staff member who speaks Spanish.

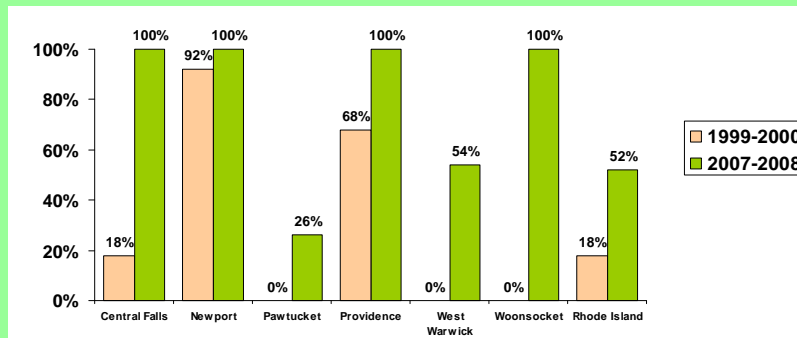
## Children Enrolled in Early Head Start, 2007

- ❖ According to Census 2000, an estimated 3,092 children in Providence under age 3 were income-eligible for enrollment in the Early Head Start program. *In 2007, of these children, 36 (1%) were enrolled in Early Head Start.*
- ❖ In 2007, Early Head Start served 5% of the estimated 7,342 eligible children under age 3 in Rhode Island

## Children Enrolled in Head Start, 2007

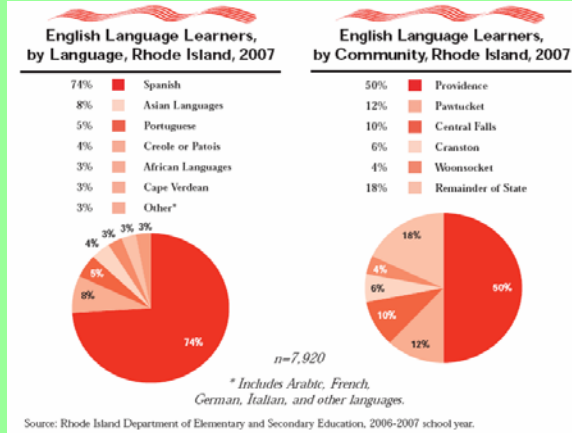
- ❖ According to Census 2000, an estimated 1,919 children in Providence ages 3-4 were eligible for enrollment in the Head Start preschool program. *In 2007, 600 (31%) Providence children were enrolled in Head Start.*
- ❖ In 2007, Head Start served 47% of the estimated 4,848 eligible children ages 3-4 in Rhode Island.

## Children in Full-Day Kindergarten



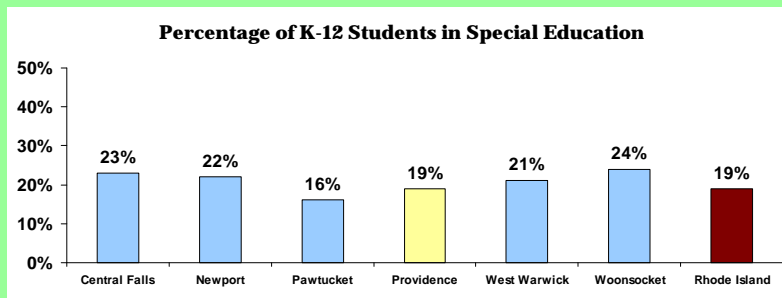
- ❖ In Rhode Island in 2007-2008, 52% (5,078) of children who attended kindergarten were in a full-day program. Nationally in 2005, 69% of public-school kindergarten students were enrolled in full-day programs.
- ❖ As of the 2006-2007 school year, 13 school districts offered universal access to full-day kindergarten classrooms, including Providence. Another 7 school districts operated at least 1 full-day kindergarten classroom.
- ❖ The percentage of children participating in full-day kindergarten in the core cities has doubled, from 40% in 1999-2000 to 84% in 2007-2008.

# English Language Learners



❖ During the 2006-2007 school year, 3,947 (16%) of Providence’s 25,012 students were English Language Learners. Of those, 505 (13%) were pre-K and Kindergarten students, 2,058 (52%) were elementary students in grades 1-5, 673 (17%) were middle school students in grades 6-8, and 711 (18%) were high school students.

# Children in Special Education

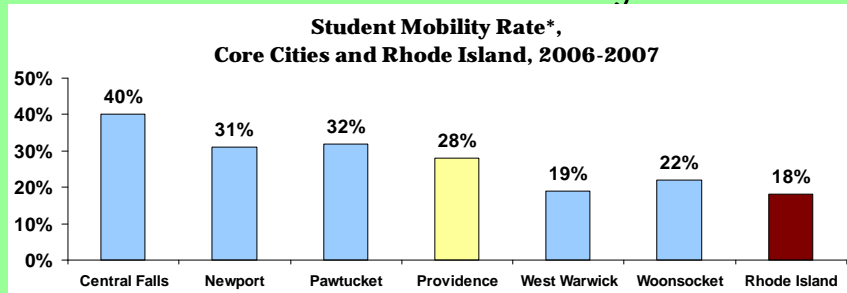


Source: Rhode Island Department of Elementary and Secondary Education, 2006-2007.

In the 2004-2005 school year (the most recent year national data were tabulated), Rhode Island had the highest percentage (20%) of public school students identified as disabled and receiving special education services in the country.

❖ In the 2006-2007 school year, 19% of Providence students were enrolled in special education, which is equal to the state rate. There were an additional 461 preschool-age students receiving special education services in RI.

## Student Mobility



Source: Rhode Island Department of Elementary and Secondary Education, 2006-2007

❖ Children who move perform worse on standardized tests than children who have not experienced mobility. The more frequent the number of moves, the worse the performance.

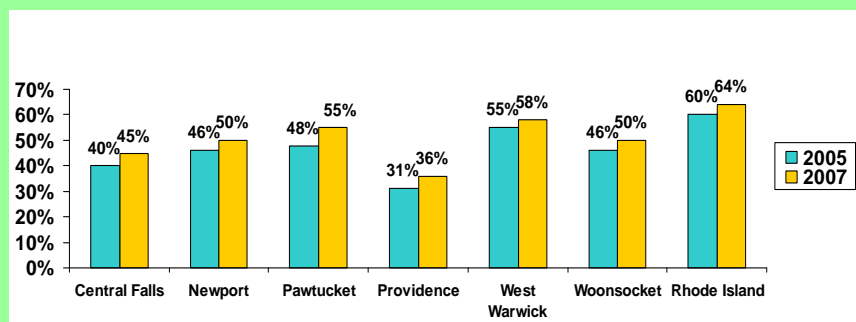
❖ In Rhode Island, students who move are absent more often than students who do not move. Rhode Island students who did not change schools had a 92% attendance rate, compared with 82% for those who moved once, 79% for those who moved 2 or 3 times and 70% for those who moved 4 times.

❖ The mobility rate in Providence (28%) is about the same as the core city average (29%) and much higher than the state rate of (18%).

\*The mobility rate is the total children enrolled and exited during a year divided by the total year's enrollment.

## Fourth Grade Reading Skills

**Fourth-Grade Reading Proficiency  
% At or Above the Proficiency Level  
Core Cities and Rhode Island, 2005 & 2007**



Source: Rhode Island Department of Elementary and Secondary Education, 2005 & 2007.

❖ Between 2005 and 2007, Providence saw improvements in the percentage of fourth grade students proficient in reading from 31% to 36% .

❖ Despite improvements, Providence has the lowest 4<sup>th</sup> grade reading proficiency level in the state.

## Eighth Grade New England Common Assessment Program (NECAP)

NECAP Reading and Math Proficiency

Fall 2005 & 2007 (test years)

	Reading		Mathematics	
	2005	2007	2005	2007
Central Falls	27%	35%	16%	23%
Newport	50%	46%	39%	42%
Pawtucket	44%	47%	37%	36%
<b>Providence</b>	<b>25%</b>	<b>37%</b>	<b>20%</b>	<b>24%</b>
West Warwick	56%	62%	51%	49%
Woonsocket	28%	30%	29%	17%
Rhode Island	56%	62%	47%	48%

Source: Rhode Island Department of Elementary and Secondary Education, NECAP October 2005 and 2007

❖ Providence 8<sup>th</sup> graders have the lowest rates of reading proficiency in the state despite a 48% increase since 2005. Providence 8<sup>th</sup> graders also have the 3<sup>rd</sup> lowest math proficiency at 24%. The state rate is 48%.

❖ NECAP is the New England Common Assessment Program. There are four levels of proficiency: Proficient with Distinction, Proficient, Partially Proficient and Substantially Below Proficient.

## High Performing Schools 2007

### Elementary and Middle School Classifications

	Providence	Rhode Island
% Making Insufficient Progress	36%	11%
% Moderately Performing	58%	21%
% High Performing	6%	68%
<i>Total number of schools</i>	33	250

### High School Classifications

	Providence	Rhode Island
% Making Insufficient Progress	53%	40%
% Caution	0%	10%
% Made Adequate Yearly Progress	47%	50%
<i>Total number of schools</i>	15	58

Source: Rhode Island Department of Elementary and Secondary Education, 2006-2007.

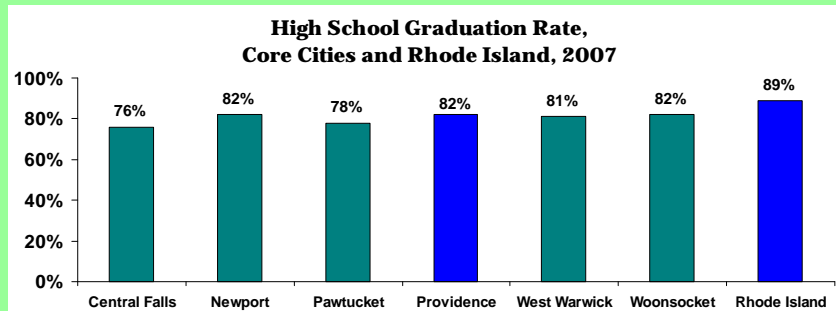
## School Suspensions, 2007

School District	# of Students Enrolled	Out-of-School Suspension	In-School Suspension	Alternative Program Placement	Total Disciplinary Actions	Actions per 100 Students
Providence	25,012	8,594	3,296	0	11,890	48
Core Cities	49,321	15,301	7,940	1,438	24,679	50
Remainder of State	94,524	12,706	6,527	2,560	21,793	23
Rhode Island	147,196	28,419	14,637	3,999	47,065	32

Source: RI Department of Elementary and Secondary Education, 2006-2007.

- ❖ Suspended students are more likely to have poor academic performance & to drop out.
- ❖ In 2006-2007 in Providence, there were 48 disciplinary actions for every 100 students. This is slightly lower than the core city average but significantly higher than the state rate of 32 actions per every 100 students.
- ❖ In 2006-2007, the high school attendance rate in Providence was 85%, compared to 90% in the state as a whole.

## High School Graduation Rate (2007: Old Method)



Source: Rhode Island Department of Elementary and Secondary Education, 2006-2007 School Year.

- ❖ In 2007 in Rhode Island, 89% of all students graduated. 91% of White students, 89% of Asian students, 86% of Black students, 69% of Native American students, and 82% of Hispanic students graduated in Rhode Island in 2007.
- ❖ In Providence in 2007, 82% of students graduated from high school, compared to 89% for the state as a whole.

## High School Graduation and Dropout Rates (2007: New Method)

	Graduation Rate	Dropout Rate	GED Rate	Retention Rate
Central Falls	46%	39%	3%	12%
Newport	60%	25%	4%	11%
Pawtucket	48%	33%	12%	7%
<b>Providence</b>	<b>58%</b>	<b>31%</b>	<b>4%</b>	<b>7%</b>
West Warwick	67%	18%	4%	10%
Woonsocket	54%	34%	5%	8%
<b>Rhode Island</b>	<b>70%</b>	<b>19%</b>	<b>5%</b>	<b>6%</b>

Source: Rhode Island Department of Elementary and Secondary Education, 2007.

- ❖ This chart shows the percentage of students who matriculated as freshmen in 2003-2004 who graduated in 4 years, dropped out, completed their GED and were retained in school. These percentages are based on actual student counts using the unique student identifier system.
- ❖ In Providence in 2007, 58% of students graduated from high school on-time, compared to 70% for the state as a whole.

\*Percentages may not sum to 100% due to rounding.



**Elaine Budish**  
**Research Analyst**  
**Rhode Island KIDS COUNT**  
**One Union Station**  
**Providence, RI 02903**  
**ebudish@rikidscount.org**  
**(401) 351-9400 voice**  
**(401) 351-1758 fax**  
**www.rikidscount.org**