

KIDS COUNT®

#RaceforResults

Building a Path to Opportunity
For All Children

Laura Speer

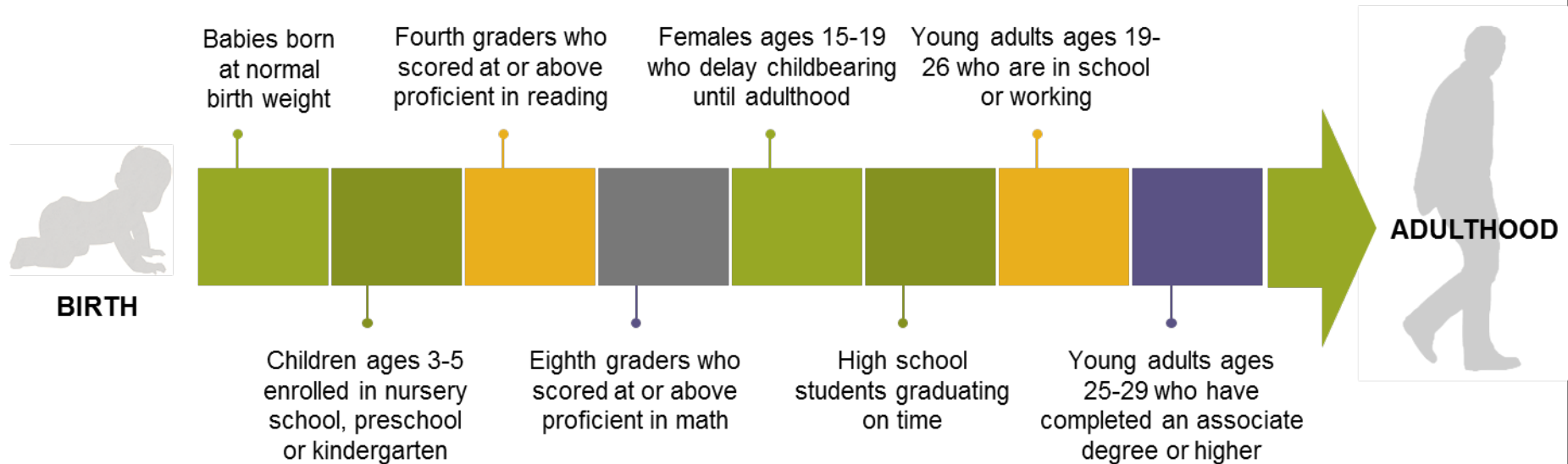
lspeer@aecf.org



THE ANNIE E. CASEY FOUNDATION



The Race for Results Index



Children who live with a householder who has at least a high school diploma



Children who live in two-parent families

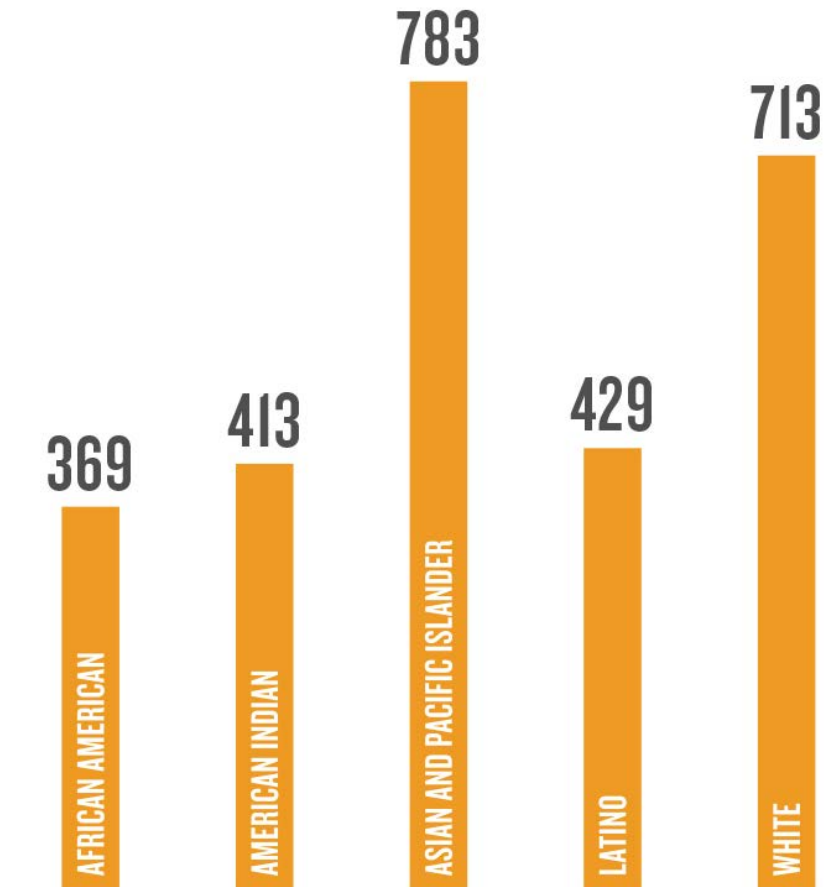


Children who live in families with incomes at or above 200 percent of poverty

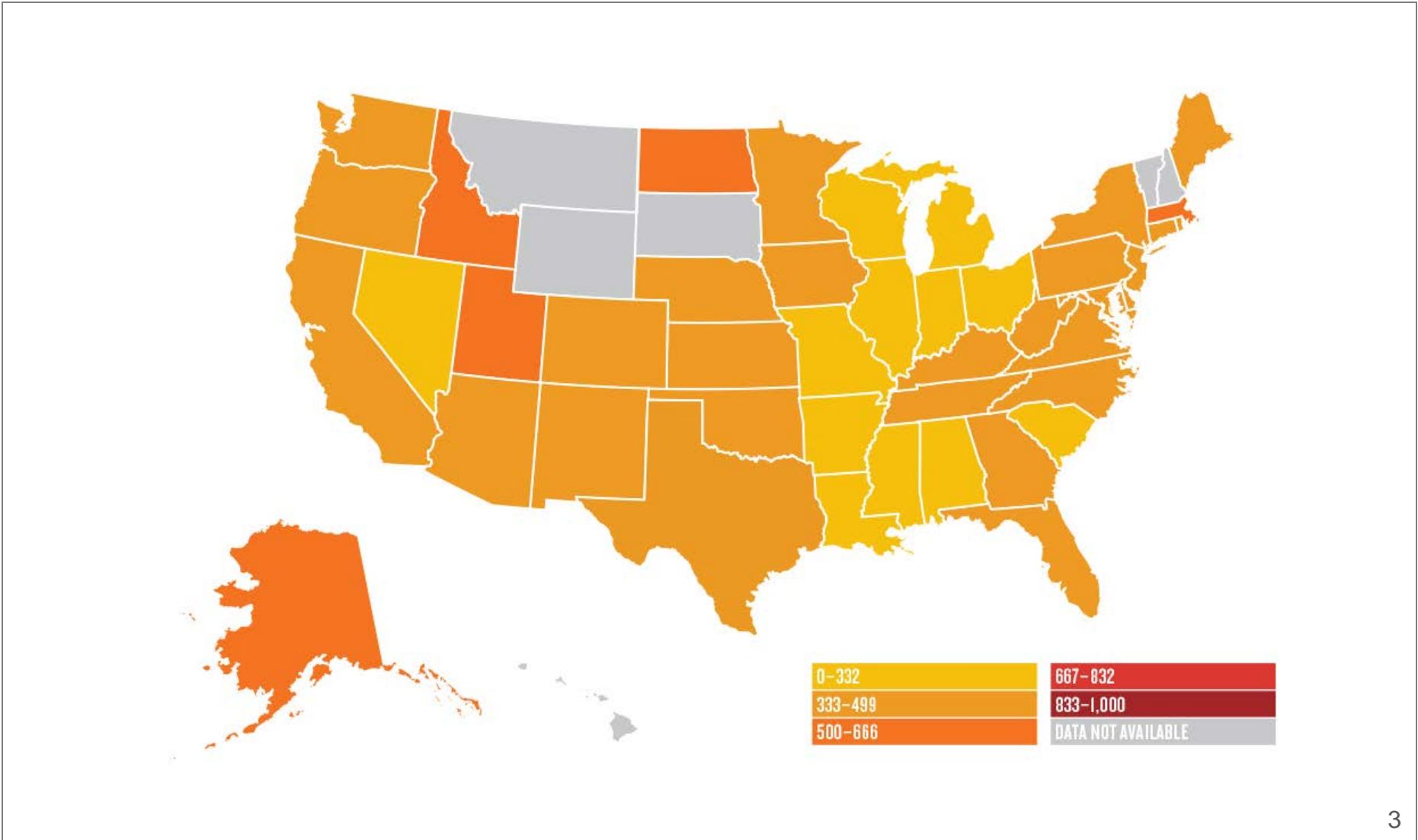


Children who live in low-poverty areas (less than 20 percent in poverty)

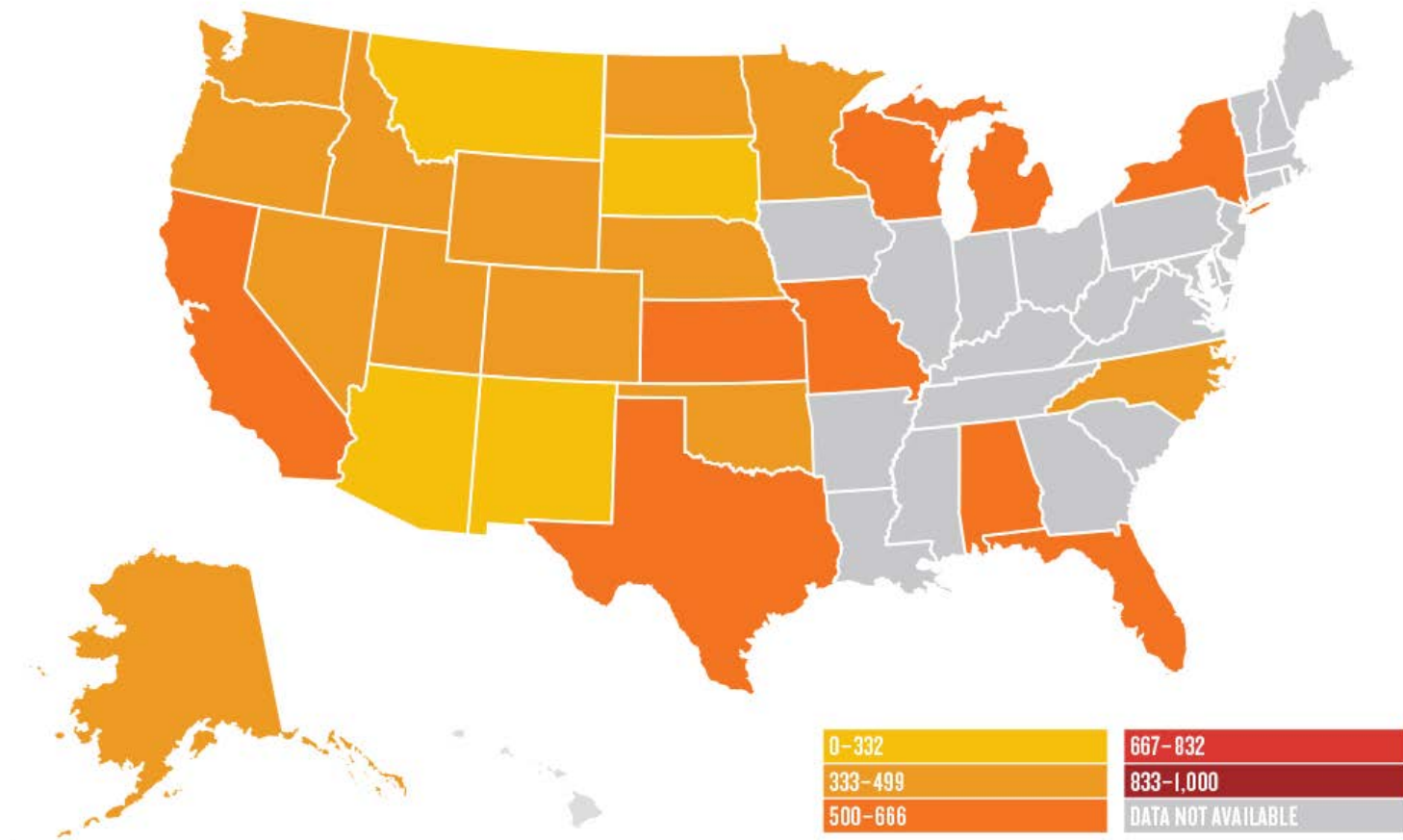
Race for Results Index Scores



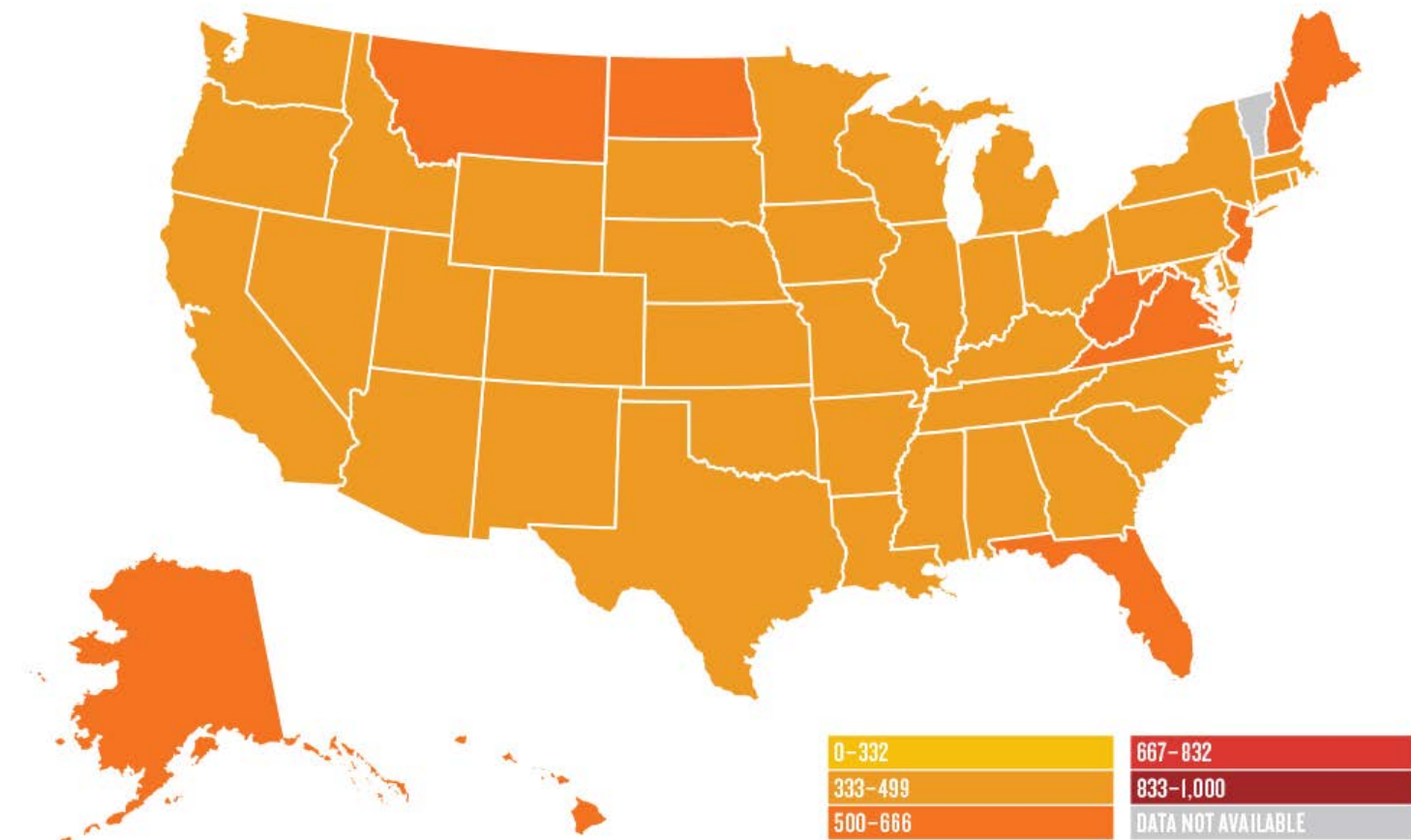
NOTE: Racial and Hispanic origin categories are mutually exclusive.



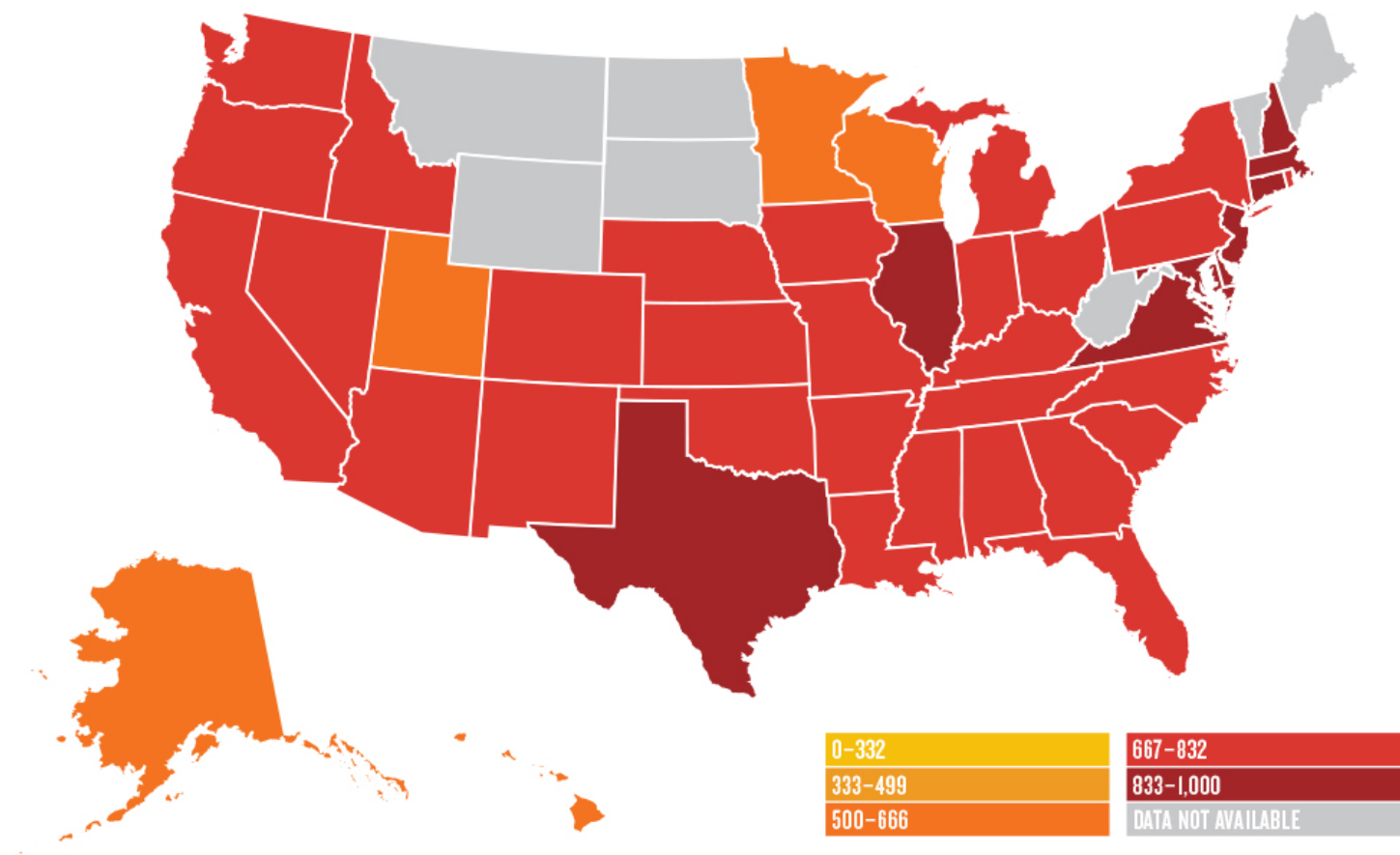
American Indian Children



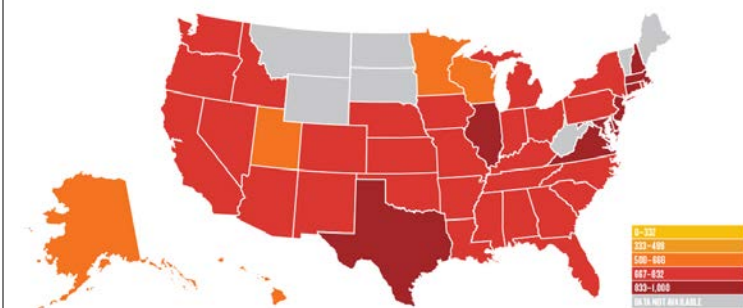
Latino Children



Asian – Pacific Islander Children



Asian – Pacific Islander Children



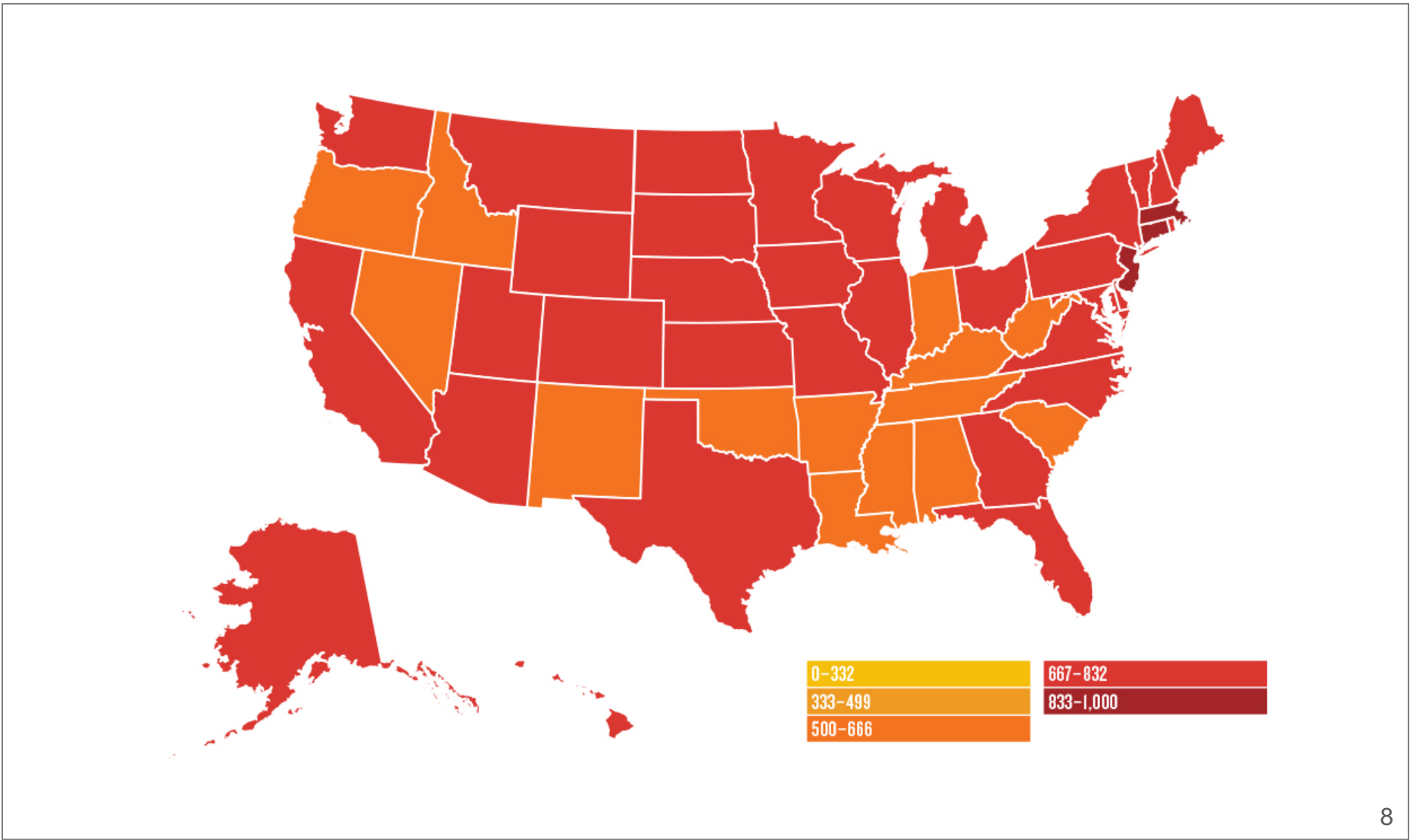
ASIAN AND PACIFIC ISLANDER CHILDREN LIVING ABOVE 200% OF POVERTY, BY ORIGIN

ASIAN INDIAN	84%
BANGLADESHI	40%
CAMBODIAN	53%
CHINESE*	71%
FILIPINO	78%
HMONG	32%
JAPANESE	81%
KOREAN	73%
PAKISTANI	54%
VIETNAMESE	59%

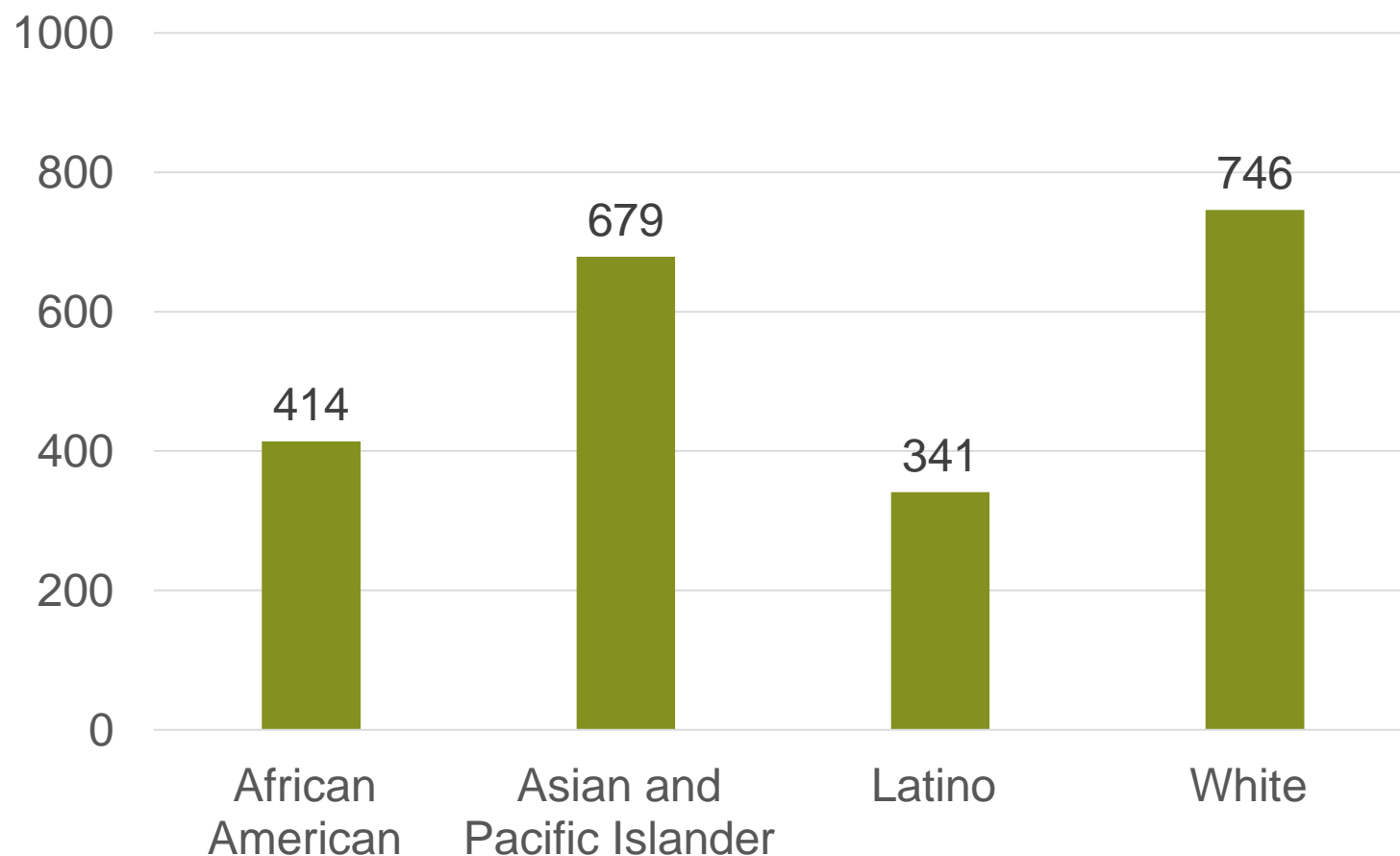
SOURCE: U.S. Census Bureau, 2013–2015 pooled 1-year American Community Survey PUMS data.

NOTE: All groups are non-Hispanic.

* Except Taiwanese



2017 Race for Results Index Values – Rhode Island



Note: Index values for American Indian children unavailable due to small numbers

Key Facts about Latino Children in RI

1 in 4
Children
in RI are
Latino

- 25% of RI children are Latino (up from 14% in 2000)
- 28% of RI children under 5 are Latino
- 51,000 Latino children living in RI
- Significantly more likely to be from Caribbean than national average
- 28,000 RI Latino children living in an immigrant family (55%)

Race for Results Measures

Latinos	US	RI	RI ranking
Babies born at healthy birthweight	93%	92%	34
Children 3 – 5 enrolled in ECE	55%	44%	43
4 th Grade Reading Proficient	21%	20%	26
8 th Grade Math Proficient	19%	13%	44

Race for Results Measures

Latinos	US	RI	RI ranking
Graduating HS on time	78%	76%	26
Delayed child birth	93%	93%	13
Young people 19 to 26 in school or working	81%	78%	45
Young people 25 to 29 with AA or more	22%	21%	26

Race for Results Measures

Latinos	US	RI	RI ranking
Children with parents with HS Diploma or more	66%	67%	29
Children living with two parents	66%	53%	46
Children living in household above 200% FPL	38%	28%	46
Children living in neighborhoods where poverty is low	53%	31%	50



Recommendations to Embed Equity into Policy

Gather and analyze data to inform all phases of programs, policies and decision making

Target investments and resources to yield the greatest impact for children of color.

Use **approaches proven to work** on improving outcomes for children and youth of color.

Integrate **economic inclusion strategies** within economic and workforce development efforts.

Recommendations to Support Children in Immigrant Families

Keep **families together** and in their communities

Help children meet **developmental milestones**

Increase **economic opportunity** for parents



THE ANNIE E. CASEY FOUNDATION

Laura Speer
lspeer@aecf.org

RACE FOR RESULTS

BUILDING A PATH TO OPPORTUNITY
FOR ALL CHILDREN

